

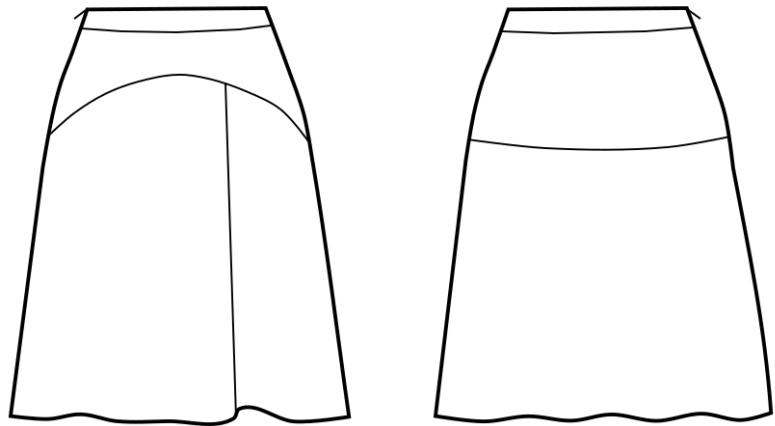
## PATTERN OVERVIEW

### Made-to-measure pattern:

The pattern is drafted by our proprietary software specifically for your measurements that you supply when making an online order. We strongly recommend that you request a free preview to check the style lines and the amount of fabric needed before ordering the paid version.

### Pattern features:

A-line skirt with waistband and a front pleat, zipper in side seam. The skirt sits at natural waistline, the length is at center of kneecap, ease around waist is approx. 1", ease around hips approx. 1.5" depending on the size.



**Recommendations on fabric:** wool or semi-wool, dress fabric, suiting fabric, bottom weight woven fabric.

**You will also need:** fusible interfacing, 1 zipper (the length in cm and inches is mentioned on the pattern piece, 1 button.

### Seam allowances:

If the pattern has double contour the seam allowances are included and are as follows: ½ inch on all seams, center back seam - ⅝ inch to allow for zipper installation, 1 inch on hem of skirt.

Attention! Seam allowances are NOT included by default and need to be added when laying out and cutting details if your pattern has single contour.

### Fabric requirements:

To estimate fabric requirements, get a free preview for the pattern in your size at [www.Lekala.net](http://www.Lekala.net) and use [Online Fabric Estimator](#). Alternatively you may print all the paper patterns and lay them out at the width of fabric you plan to use (usually 44 inches to 60 inches) to see how much fabric you will need. Don't forget to count pair parts and symmetrical parts.

When sewing the garment, pay attention to notches, they must match up.

## CUTTING:

Lay pattern pieces out using the straight of grain line. Some pieces may be cut on the fold. This is noted on the pattern piece. Mark all notches and other design features such as darts, pleats etc. from the pattern onto your fabric.

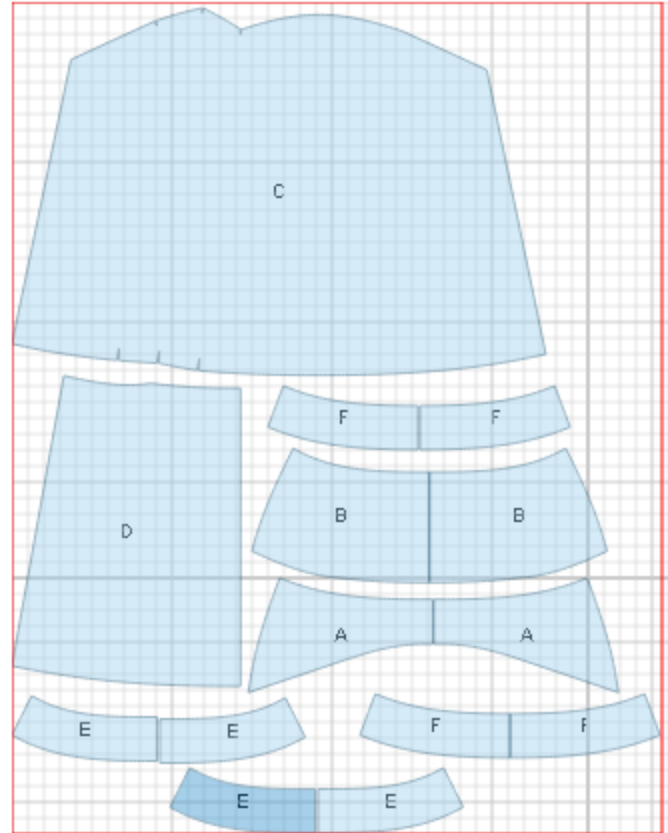
### Main fabric:

1. Upper Front - cut 1 on fold ( A )
2. Upper Back - cut 1 on fold ( B )
3. Lower Front - cut 1 ( C )
4. Lower Back - cut 1 on fold ( D )
5. Loop - cut 2 (optional)
6. Back Waistband - cut 1 on fold ( E )
7. Back Waistband Facing - cut 1 on fold ( E )
8. Front Waistband - cut 1 on fold ( F )
9. Front Waistband Facing - cut 1 on fold ( F )

### Fusible interfacing:

1. Back Waistband Facing - cut 2 ( A )
2. Front Waistband Facing - cut 2 ( B )

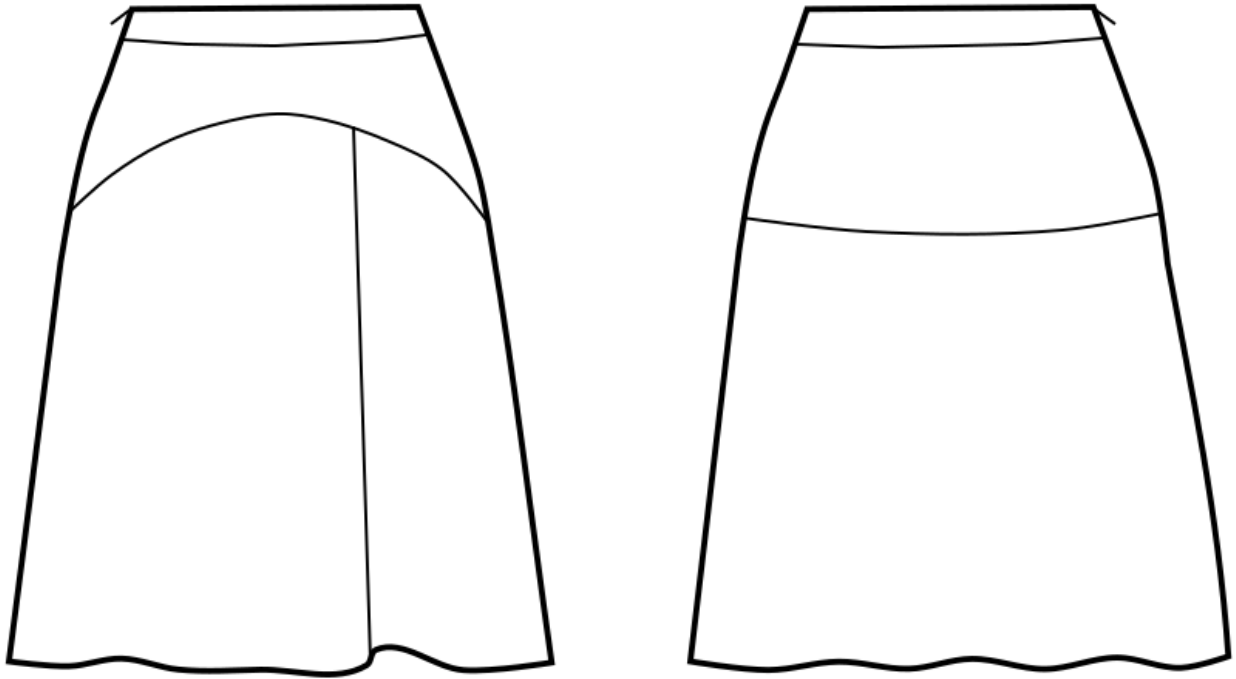
\* The capital letters in brackets correspond to pattern blocks as seen in Online Fabric Estimator and in [sample layouts](#) on the right.



---

## INSTRUCTIONS:

1. Apply fusible interfacing to Front Facing and Back Facing.
2. Make and fasten a pleat on Lower Front according to marking.
3. Sew upper and lower Fronts, serge seam and press it upwards.
4. Sew upper Front to Front waistband, serge seam and press it upwards.
5. Sew Upper and Lower Backs, serge seam and press it upwards.
6. Sew upper Back to Back waistband, serge seam and press it upwards.
7. Sew right side seam. Sew left side seam from zipper notch to hem. Install lapped zipper according to instructions on packet.
8. Sew side seam on waistband facings.
9. Serge lower edge of facing.
10. Pin facing, right sides together, to waistband, matching side seams. The seam allowances of facings should line up with the lapped zipper. Sew, and grade seam allowance.
11. Press along upper edge so that facing is toward inside. Slip stitch facings to seam allowances along side seams. Stitch in the ditch if desired.
12. Slip stitch short ends of facings to zipper tape.
13. Hem skirt by hand or machine as desired.



*If you have any further questions regarding the pattern,  
please don't hesitate to contact us at [info@sewist.com](mailto:info@sewist.com).*

*We are always happy to help!*