

S3014 Petal Skirt

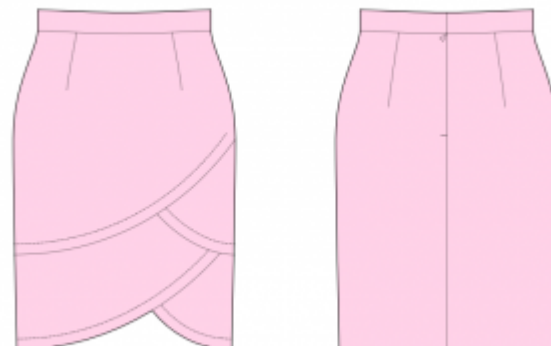
Recommended fabrics: natural/mixed fabrics suitable for skirts.

Seam allowances: 3/8 inch on all seams. Seam along back hem depends on the selected size and is approximately 2 1/8 inch to match the width of the front facing.

You will also need: zipper (the length is mentioned on the Center Back pattern block), hook and eye, fusible interfacing.

Note on seam allowances:

- If the pattern has double contour the seam allowances are included.
- If the pattern has single contour, the seam allowances are NOT included and need to be added when laying out the pattern.



Note on length of fabric:

Attention! The amount of fabric needed for your pattern is not included. It will depend on the selected pattern size, the width, and design of the fabric you plan to use. You are welcome to use the Online Fabric Estimator to make calculations. Alternatively, print all the paper patterns and lay them out at the width of fabric you plan to use (usually from 90 to 150 cm). Measure how much fabric you will need. Don't forget to account for pieces that need to be cut multiple times and pieces that are cut on the fold.

PRINTING:

Please use Adobe Reader software to open your PDF pattern. You can get Adobe Reader free of charge at this link - <https://get.adobe.com/reader/>.

Make sure you print your patterns at actual size (100%% scale or None) and on single sides of plain A4 paper. Verify that the print out size is to the correct scale by measuring the test square on the first page. The upper edge of the square features a centimeter scale, and the bottom edge features an inch scale.

Trim top and/or right margin of the pages where you see the scissors symbols. In the center of each page, the number of row and column is printed, separated by / sign. Construct layout pages according to these marks (for example, page marked 2/3 is in the second row and in the third column). Align pages using margins and tape or glue together.

CUTTING:

Note on cutting:

Lay out your pieces according to straight of grain as marked on the pattern pieces.

Some pieces will be cut on the fold, the corresponding edge will then be marked with a fold mark. Kindly pay attention to notes regarding type of fabric and quantity of required pieces on a block. For example, [Main, Interfacing - cut 1+1] on a pattern piece means that you need to cut 1 piece as is and 1 mirrored piece from the main fabric as well as from interfacing.

Make sure to mark all notches and other design features such as pleats etc. from the pattern piece onto your fabric. When sewing the garment, pay attention to notches, they must match up.

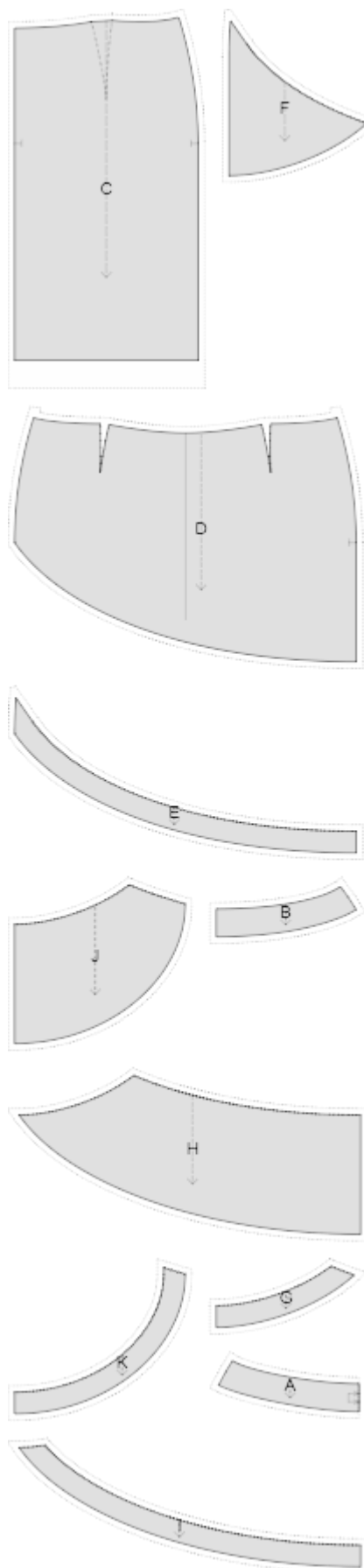
Self

- (A) Front Facing - cut 2 on fold
- (B) Back Facing - cut 2 +2
- (C) Back Skirt - cut 1 +1
- (D) Upper Front - cut 1
- (E) Upper Front Facing - cut 1
- (F) Front Layer 1 - cut 1
- (G) Front Layer 1 Facing - cut 1
- (H) Front Layer 2 - cut 1
- (I) Front Layer 2 Facing - cut 1
- (J) Front Layer 3 - cut 1
- (K) Front Layer 3 Facing - cut 1

Interfacing

- (A) Front Facing - cut 2 on fold
- (B) Back Facing - cut 2 +2

* The capital letters in brackets correspond to pattern blocks as seen in Online Fabric Estimator and in pattern blocks preview on the right.



INSTRUCTIONS:

Apply fusible interfacing to front waistband facing and back waistband facings.

1. Serge inner edge of Front Layer 3 Facing.

Pin Front Layer 3 Facing to Front Layer 3 along hem from the right side, right sides together. Sew along hem. Grade seam, turn facing onto wrong side and press. Optionally topstitch a decorative stitch along hem at approximately 3/8 inch.

2. Serge inner edge of Front Layer 2 Facing.

Pin Front Layer 2 Facing to Front Layer 2 along hem from the right side, right sides together. Sew along hem. Grade seam, turn facing onto wrong side and press. Optionally topstitch a decorative stitch along hem at approximately 3/8 inch.

3. Baste together Front Layer 2 to Front Layer 3 along short curved edge. Layer 3 should be below Layer 2 when viewed from the right side. Pin inner edge of Front Layer 1 Facing to this basted edge from the right side, right sides together. Sew and serge seam allowances together.

4. Pin hem edge of Front Layer 1 Facing to hem edge of Front Layer 1 from the right side, right sides together. You will have to temporarily fold Layer 2 and Layer 3 away to free this edge, but do not press that seam apart. Sew along hem edge of Front Layer 1, grade the seam, turn facing with Layer 2 and 3 onto wrong side and press along hem of Layer 1. Optionally topstitch a decorative stitch along hem at approximately 3/8 inch, stitching together only the Front Layer 1 and its facing.

5. Slip stitch together seam allowances near upper edge of Front Layer 1 Facing through all layers to make a stable upper edge of the bottom layered front piece. Slip stitch together seam allowances near side edge through all layers to make a stable side seam. The resulting piece is referred to as Bottom Front in the future.

6. Sew darts on upper front, press towards center.

7. Pin upper edge Upper Front Facing onto top edge of Bottom Front, sew, and serge all seam allowances together.

8. Pin hem edge of Upper Front Facing onto Upper Front from the right side, right sides together. Sew, grade the seam, turn right side out and press. Optionally topstitch a decorative stitch along hem at approximately 3/8 inch, stitching together only the Upper Front and its facing.

9. Sew darts on back and press bulks towards center.

10. Sew side seams, serge and press towards back.

11. Serge short edges of waistbands and waistband facings. Sew side seam on waistbands and press apart. Pin waistband to waistline from the right side, right side together, and sew. Serge and press towards waistband.

12. Sew side seam on waistband facings. Pin waistband facing to waistband along waistline and sew. Grade the seam.

13. Serge center edges of Backs separately. Pin Right Back to Left Back. Sew center back seam from notch for

zipper to bottom. Press back center seam apart, pressing apart the slit for zipper on backs and back waistband at the same time. Sew in zipper.

14. Fold waistband facing onto wrong side and press along waistline. Turn under the seam allowances of the short edges of the waistband facings near zipper. Slip stitch to zipper tape. Sew hook and eye near waist.

15. Turn lower edge of waist facing under so that it covers the seam between waistband and skirt and press. Stitch in the ditch from the right side, sewing waistband facing in place.

16. Hem the back skirt by hand. If you have topstitched the front layers, continue this decorative stitch along back hem.

TECHNICAL DRAWING:

