

## PATTERN OVERVIEW

### Made-to-measure pattern:

The pattern is drafted by our proprietary software specifically for your measurements that you supply when making an online order. We strongly recommend that you request a free preview to check the style lines and the amount of fabric needed before ordering the paid version.

### Pattern features:

Pencil skirt with straight waistband, zipper in side left seam.

The skirt sits at natural waistline, the length is at center of kneecap, ease around waist is approx. 1", ease around hips approx. 1.5" depending on the size.

**Recommendations on fabric:** wool or semi-wool, dress fabric, suiting fabric, bottom weight woven fabric.

**You will also need:** fusible interfacing, 1 zipper (the length in cm and inches is mentioned on the pattern piece, 1 button.

### Seam allowances:

If the pattern has double contour the seam allowances are included and are as follows: ½ inch on all edges. hem of skirt – 1 inch.

Attention! Seam allowances are NOT included by default and need to be added when laying out and cutting details if your pattern has single contour.

### Fabric requirements:

To estimate fabric requirements, get a free preview for the pattern in your size at [www.Lekala.net](http://www.Lekala.net) and use [Online Fabric Estimator](#). Alternatively you may print all the paper patterns and lay them out at the width of fabric you plan to use (usually 44 inches to 60 inches) to see how much fabric you will need. Don't forget to count pair parts and symmetrical parts.

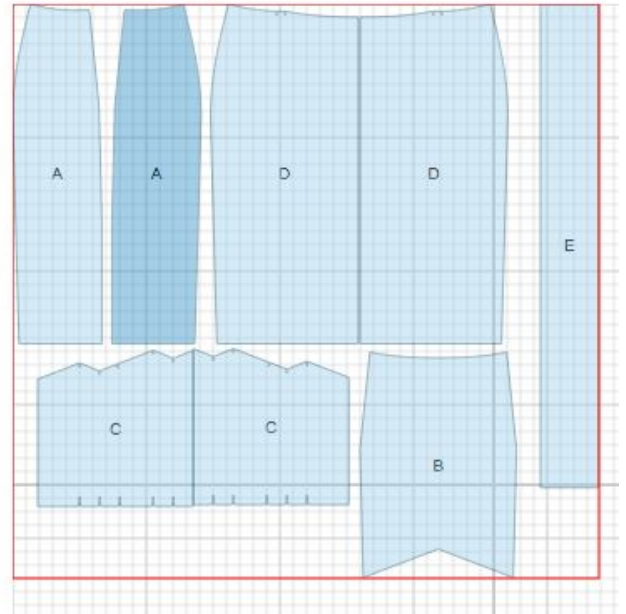
When sewing the garment, pay attention to notches, they must match up.

## CUTTING:

Lay pattern pieces out using the straight of grain line. Some pieces may be cut on the fold. This is noted on the pattern piece. Mark all notches and other design features such as darts, pleats etc. from the pattern onto your fabric.

### Main fabric:

1. Front - cut 1 on fold (D)
2. Side back - cut 2 (A)
3. Center back - cut 1 (B)
4. Lower center back - cut 1 on fold (C)
5. Waistband - cut 1 (E)



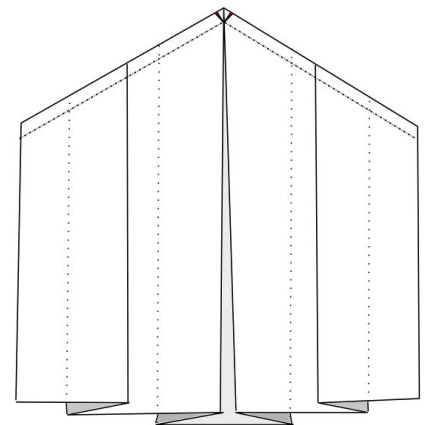
### Fusible interfacing:

1. Waistband - cut 1 (E)
2. We recommend applying a thin strip of fusible interfacing to V-shaped lower edge of center back.

\* The capital letters in brackets correspond to pattern blocks as seen in Online Fabric Estimator.

## INSTRUCTIONS:

1. Apply fusible interfacing to waistband and to V-shaped lower edge of center back.
2. Make and baste pleats on lower center back. Following the pleat guideline on the pattern, make a box pleat in the center and a pleat on each side of center with the bulk press toward



- 
- the side. Clip center back just to seamline. This makes it easier to attach the lower center back.
3. Pin right side of lower center back to right lower edge of center back. Stitch up to corner.
  4. Repeat for left side of lower center back. Sew a line of reinforcement stitching in the corner. Serge and press seam towards top. Treat center back as one piece in the future.
  5. Sew side backs to center back, matching notches. Serge and press seams towards center.
  6. Sew darts on front, press towards center.
  7. Serge each side edge separately.
  8. Sew right side seam and press open.
  9. Sew left side seam from notch for zipper to bottom. Press seam open, including opening for zipper.
  10. Sew in a lapped zipper according to zipper instructions that come with the packet.
  11. Sew waistband to waistline edge, right sides together, matching notches. The side back left seam allowance should line up with the lapped zipper and the front right side should extend enough so that the waistband can overlap. Press the seam allowance of the unstitched long edge under.
  12. Fold waistband along center line at the ends, right sides together, and sew short ends. Trim corners. Pull corners out so they are square.
  13. Press seam toward waistband. Trim and grade seams as needed. Press along center line so that waistband-facing is toward inside and turned edge meets up with the edge of the seamline.  
Slip-stitch in place. Stitch in the ditch along edges of the outside waistband if desired.
  14. Make buttonhole on left side and sew button on right.
  15. Hem skirt by hand or machine as desired.
- 

*If you have any further questions regarding the pattern, please don't hesitate to contact us at [info@sewist.com](mailto:info@sewist.com).*



## Pattern S3013



---

*We are always happy to help!*

---