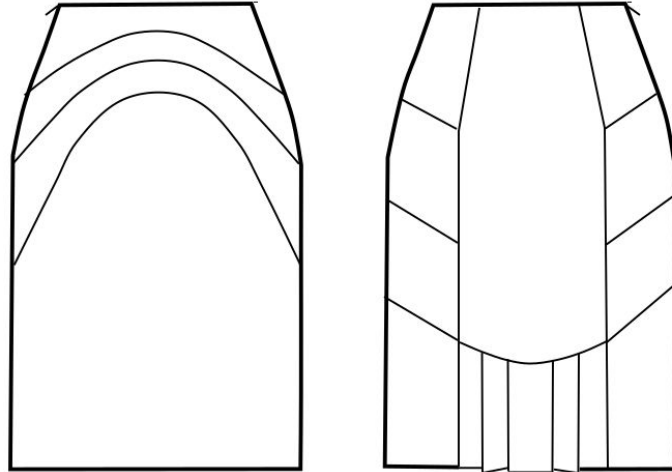


PATTERN OVERVIEW

Made-to-measure pattern:

The pattern is drafted by our proprietary software specifically for your measurements that you supply when making an online order. We strongly recommend that you request a free preview to check the style lines and the amount of fabric needed before ordering the paid version.



Pattern features:

Straight skirt with waistband facing and front/back inserts, zipper in left side seam. The skirt sits at natural waistline, the length is at center of kneecap, ease around waist is approx. 1", ease around hips approx. 1.5" depending on the size.

Recommendations on fabric: wool or semi-wool, dress fabric, suiting fabric, bottom weight woven fabric.

You will also need: lining, fusible interfacing, 1 zipper (the length in cm and inches is mentioned on the pattern piece, 1 hook and eye.

Seam allowances:

If the pattern has double contour the seam allowances are included and are as follows: ½ inch on all seams, ⅝ inch for zipper installation, 1 inch on hem of skirt.

Attention! Seam allowances are NOT included by default and need to be added when laying out and cutting details if your pattern has single contour.

Fabric requirements:

To estimate fabric requirements, get a free preview for the pattern in your size at www.Lekala.net and use [Online Fabric Estimator](#). Alternatively you may print all the paper patterns and lay them out at the width of fabric you plan to use (usually 44 inches to 60 inches) to see how much fabric you will need. Don't forget to count pair parts and symmetrical parts.

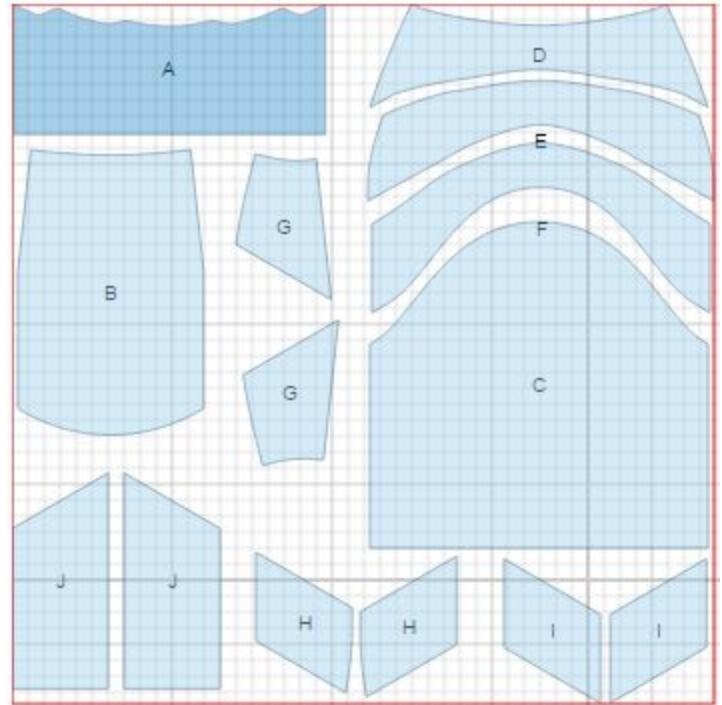
When sewing the garment, pay attention to notches, they must match up.

CUTTING:

Lay pattern pieces out using the straight of grain line. Some pieces may be cut on the fold. This is noted on the pattern piece. Mark all notches and other design features such as darts, pleats etc. from the pattern onto your fabric.

Main fabric:

1. Lower center back - cut 1 (A)
2. Center back - cut 1 (B)
3. Lower center front - cut 1 (C)
4. Upper center front - cut 1 (D)
5. Front insert 1 - cut 1 (E)
6. Front insert 2 - cut 1 (F)
7. Upper side back - cut 2 (G)
8. Back insert 1 - cut 2 (H)
9. Back insert 2 - cut 2 (I)
10. Lower side back - cut 2 (J)



Fusible interfacing:

1. Back Facing -
2. Front Facing -

* The capital letters in brackets correspond to pattern blocks as seen in Online Fabric Estimator and in sample layouts on the right.

INSTRUCTIONS:

1. Apply fusible interfacing to front facing and back facing.
2. Make pleats on lower center back according to marking, press and fasten them on upper edge with machine stitch.
3. Sew center back to lower center back. Serge and press seam upwards.

-
4. Sew upper backs to back inserts_1. Sew this piece to back inserts_2, then sew the given pieces to lower side backs. Serge all seams and press them upwards.
 5. Sew ready side backs to center back, serge and press seams towards center.
 6. Sew upper front to front insert_1. Sew the piece to front insert_2. Then sew the whole piece to lower center front. Serge seams, press them upwards.
 7. Sew right side seam. Serge and press seam towards back.
 8. Sew left side seam from zipper notch to bottom. Press seam open, including opening for zipper.
 9. Sew in a lapped zipper according to zipper instructions that come with the packet.
 10. Cut front/back facing. Apply fusible interfacing to facing pieces.
 11. Sew side seams on facings.
 12. Serge lower edge of facing.
 13. Pin facing, right sides together, to waistline , matching side seams and center front line. The seam allowances of facings should line up with the lapped zipper. Sew, and grade seam allowance.
 14. Press along upper edge so that facing is toward inside. Slip stitch facings to seam allowances along side seams.
 15. Slip stitch short ends of facings to zipper tape. Sew hook and eye near waist on the inside of skirt.
 16. Serge lower edge of skirt, turn under, press, and slipstitch.
-