

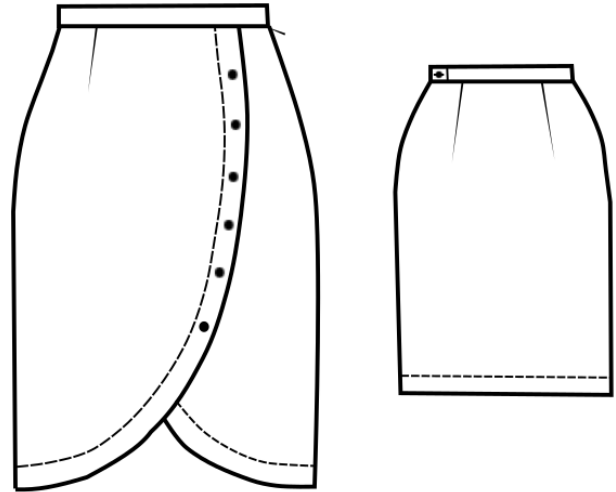
## PATTERN OVERVIEW

### Made-to-measure pattern:

The pattern is drafted by our proprietary software specifically for your measurements that you supply when making an online order. We strongly recommend that you request a free preview to check the style lines and the amount of fabric needed before ordering the paid version.

### Pattern features:

Straight skirt with waistband, wrapped front, and zipper in side seam. The skirt sits at natural waistline, the length is at center of kneecap, ease around waist is approx. 1", ease around hips approx. 1.5" depending on the size.



**Recommendations on fabric:** dress fabric, suiting fabric.

**You will also need:** fusible interfacing, 1 zipper (the length in cm and inches is mentioned on the pattern piece, 7 buttons.

### Seam allowances:

If the pattern has double contour the seam allowances are included and are as follows:  $\frac{5}{8}$  on all seams. Attention! Seam allowances are NOT included by default and need to be added when laying out and cutting details if your pattern has single contour.

### Fabric requirements:

To estimate fabric requirements, get a free preview for the pattern in your size at [www.Lekala.net](http://www.Lekala.net) and use [Online Fabric Estimator](#). Alternatively you may print all the paper patterns and lay them out at the width of fabric you plan to use (usually 44 inches to 60 inches) to see how much fabric you will need. Don't forget to count pair parts and symmetrical parts.

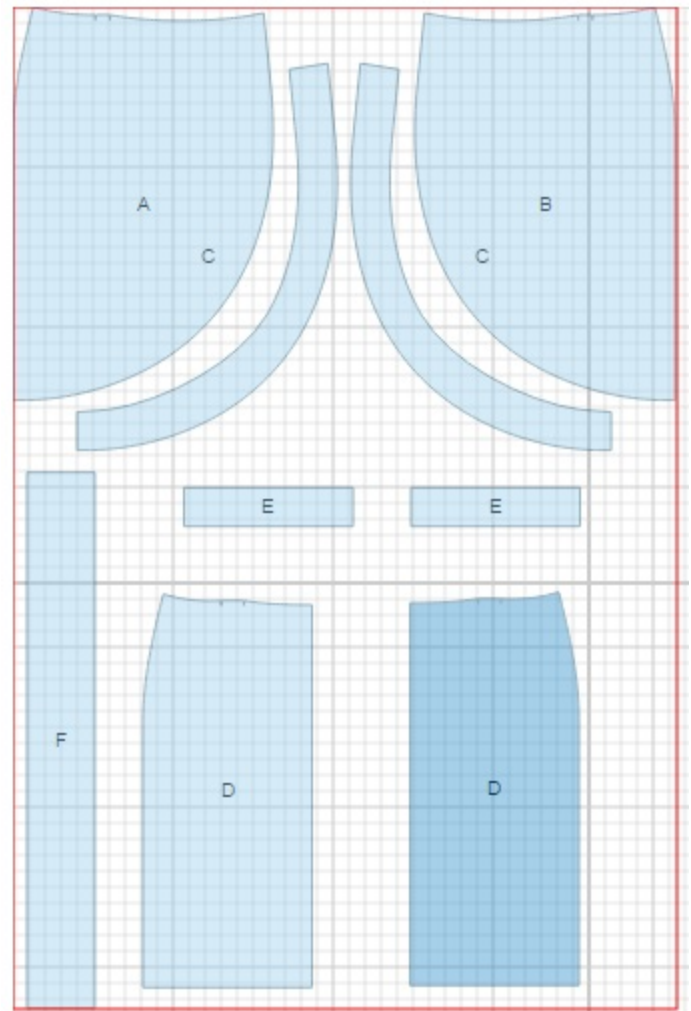
When sewing the garment, pay attention to notches, they must match up.

## CUTTING:

Lay pattern pieces out using the straight of grain line. Some pieces may be cut on the fold. This is noted on the pattern piece. Mark all notches and other design features such as darts, pleats etc. from the pattern onto your fabric.

### Main fabric:

1. Left Front - cut 1 (A)
2. Right Front (B)
3. Front Facing - cut 2 (C)
4. Back - cut 1 on fold (D)
5. Back Facing - cut 2 (E)
6. Waistband - cut 1 (F)



### Fusible interfacing:

1. Waistband - cut 1 (F)

\* The capital letters in brackets correspond to pattern blocks as seen in Online Fabric Estimator and in sample layouts on the right.

---

## INSTRUCTIONS:

1. Apply fusible interfacing to listed pieces.
2. Sew darts on Left Front, Right front and Back, press towards center.
3. Sew right side seam. Sew left side seam from zipper notch to hem. Install lapped zipper according to instructions on packet.
4. Sew lower back facings together at center back, then sew center front facings and lower back facing together at side edges. Press open. Serge outer edge of facing. Pin facing to skirt fronts and lower back. Sew to skirt. Clip into curves and understitch on seam allowance. Press. Topstitch if desired. Make buttonholes at marks.
5. Match Left and Right Fronts along upper edge. Baste together.
6. Press waistband in half. Sew one side, right sides together, to skirt. Press seam toward waistband. Serge opposite long edge. With right sides together, fold and sew vertical edges together at zipper closure. Clip corners and turn waistband right side out. Stitch in the ditch along seam line on front of waistband. Make a buttonhole on left end of waistband, sew a button on right end.
7. Serge lower edge of skirt, fold up and hem as desired.
8. Sew buttons on Left Front according to marks.

---

*If you have any further questions regarding the pattern,  
please don't hesitate to contact us at [info@sewist.com](mailto:info@sewist.com).*

*We are always happy to help!*