

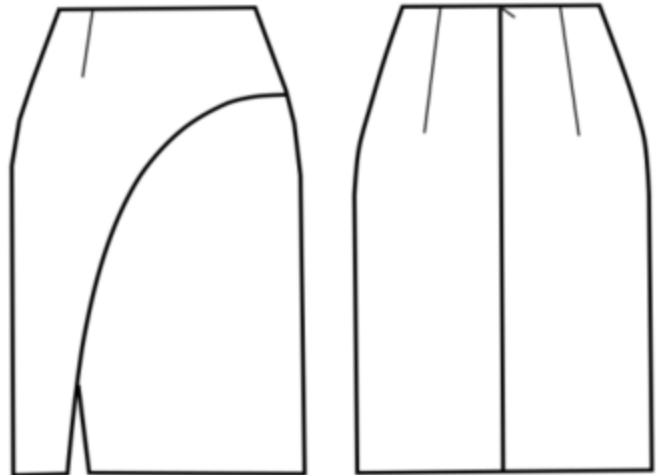
PATTERN OVERVIEW

Made-to-measure pattern:

The pattern is drafted by our proprietary software specifically for your measurements that you supply when making an online order. We strongly recommend that you request a free preview to check the style lines and the amount of fabric needed before ordering the paid version.

Pattern features:

Straight skirt with waistband facing and wrapped front, zipper in center back seam. The skirt sits at natural waistline, the length is at center of kneecap, ease around waist is approx. 1", ease around hips approx. 1.5" depending on the size.



Recommendations on fabric: wool or semi-wool, dress fabric, suiting fabric, bottom weight woven fabric.

You will also need: lining, fusible interfacing, 1 zipper (the length in cm and inches is mentioned on the pattern piece,, 1 hook and eye.

Seam allowances:

If the pattern has double contour the seam allowances are included and are as follows: ½ inch on all seams, center back seam - ⅝ inch to allow for zipper installation, 1 inch on hem of skirt.

Attention! Seam allowances are NOT included by default and need to be added when laying out and cutting details if your pattern has single contour.

Fabric requirements:

To estimate fabric requirements, get a free preview for the pattern in your size at www.Lekala.net and use [Online Fabric Estimator](#). Alternatively you may print all the paper patterns and lay them out at the width of fabric you plan to use (usually 44 inches to 60 inches) to see how much fabric you will need. Don't forget to count pair parts and symmetrical parts.

When sewing the garment, pay attention to notches, they must match up.

CUTTING:

Lay pattern pieces out using the straight of grain line. Some pieces may be cut on the fold. This is noted on the pattern piece. Mark all notches and other design features such as darts, pleats etc. from the pattern onto your fabric.

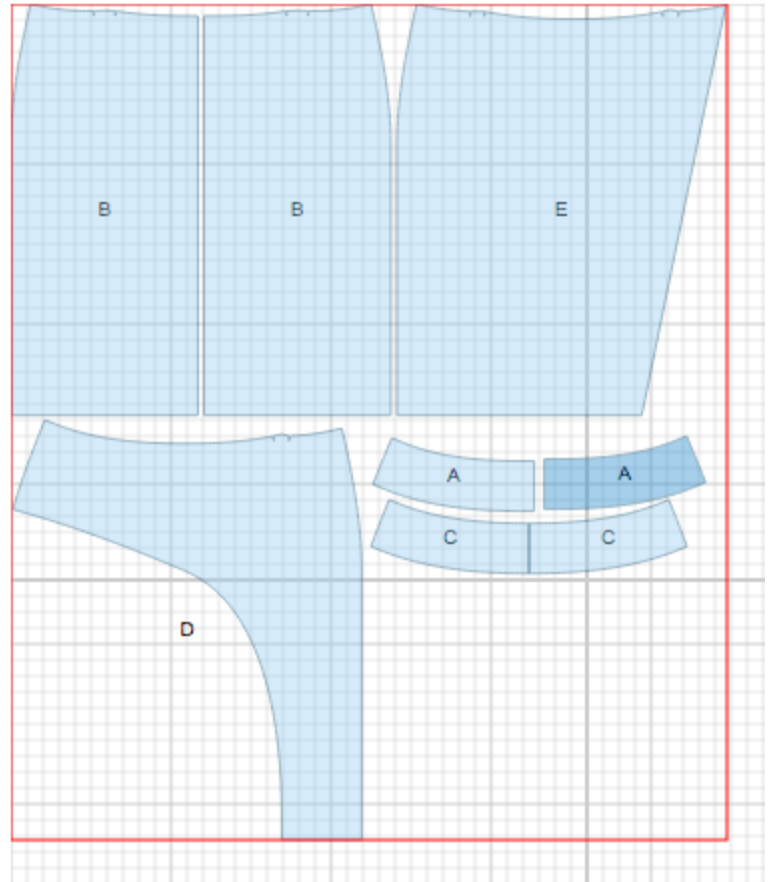
Main fabric:

1. Back Facing- cut 2 (A)
2. Back - cut 2 (B)
3. Front Facing - cut 1 on fold (C)
4. Right Front - cut 1 (D)
5. Left Front - cut 1 (E)

Fusible interfacing:

1. Back Facing - cut 2 (A)
2. Front Facing - cut 1 on fold (C)

* The capital letters in brackets correspond to pattern blocks as seen in Online Fabric Estimator and in sample layouts on the right.



INSTRUCTIONS:

1. Apply fusible interfacing to Front Facing and Back Facing.
2. Sew dart on Right Front, press towards center.
3. Finish the curved edge of Right Front using bias tape (the length is mentioned on the pattern piece) or baby hem technique as desired.
4. Sew darts on Left Front, press towards center.
5. Finish the slanted edge of Left Front, using bias tape (the length is mentioned on the pattern piece or baby hem technique as desired. Alternatively you may serge the edge, press it inside and topstitch.
6. Sew side seams, serge and press towards back.
7. Match Left and Right Fronts along upper edge, matching center line and darts. Baste together.
8. Sew darts on backs, press towards center.
9. Sew center back seam from notch for zipper to bottom. Press seam open, including opening for zipper.
10. Sew in a lapped zipper according to zipper instructions that come with the packet.
11. Sew side seams on facings.
12. Serge lower edge of facing.
13. Pin facing, right sides together, to waistline , matching side seams and center front line. The seam allowances of facings should line up with the lapped zipper. Sew, and grade seam allowance.
14. Press along upper edge so that facing is toward inside. Slip stitch facings to seam allowances along side seams.
15. Slip stitch short ends of facings to zipper tape. Sew hook and eye near waist on the inside of skirt.
16. Hem skirt by hand or machine as desired.



Pattern S3007



*If you have any further questions regarding the pattern,
please don't hesitate to contact us at info@sewist.com.*

We are always happy to help!
