

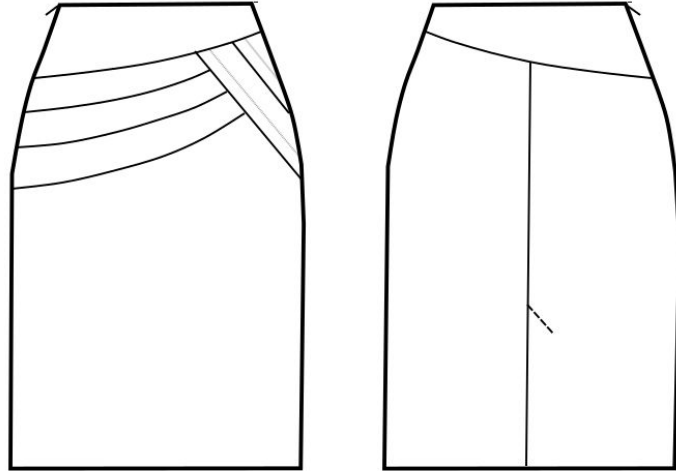
## PATTERN OVERVIEW

### Made-to-measure pattern:

The pattern is drafted by our proprietary software specifically for your measurements that you supply when making an online order. We strongly recommend that you request a free preview to check the style lines and the amount of fabric needed before ordering the paid version.

### Pattern features:

Straight skirt with contoured waistband, insets, side piece with pleats, zipper in side left seam. The skirt sits at natural waistline, the length is at center of kneecap, ease around waist is approx. 1", ease around hips approx. 1.5" depending on the size.



**Recommendations on fabric:** wool or semi-wool, dress fabric, suiting fabric, bottom weight woven fabric.

**You will also need:** lining, fusible interfacing, 1 zipper (the length in cm and inches is mentioned on the pattern piece, 1 button, 1 hook and eye.

### Seam allowances:

If the pattern has double contour the seam allowances are included and are as follows: ½ inch on all edges. hem of skirt – 1 inch.

Attention! Seam allowances are NOT included by default and need to be added when laying out and cutting details if your pattern has single contour.

### Fabric requirements:

To estimate fabric requirements, get a free preview for the pattern in your size at [www.Lekala.net](http://www.Lekala.net) and use [Online Fabric Estimator](#). Alternatively you may print all the paper patterns and lay them out at the width of fabric you plan to use (usually 44 inches to 60 inches) to see how much fabric you will need. Don't forget to count pair parts and symmetrical parts.

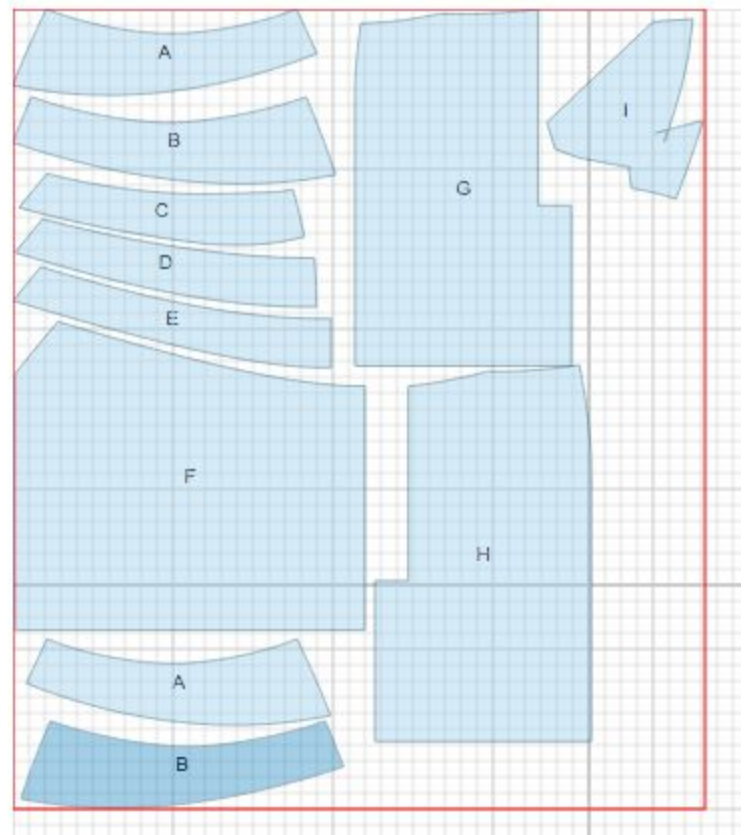
When sewing the garment, pay attention to notches, they must match up.

## CUTTING:

Lay pattern pieces out using the straight of grain line. Some pieces may be cut on the fold. This is noted on the pattern piece. Mark all notches and other design features such as darts, pleats etc. from the pattern onto your fabric.

## Main fabric:

1. Front - cut 1 (F)
2. Front Waistband+Facing - cut 2
3. Front Inset 1 - cut 1 (C)
4. Front Inset 2 - cut 1 (D)
5. Front Inset 3 - cut 1 (E)
6. Right Back - cut 1 (G)
7. Left Back - cut 1 (H)
8. Side Front - cut 1 (I)
9. Back Waistband+Facing- cut 2 (A)



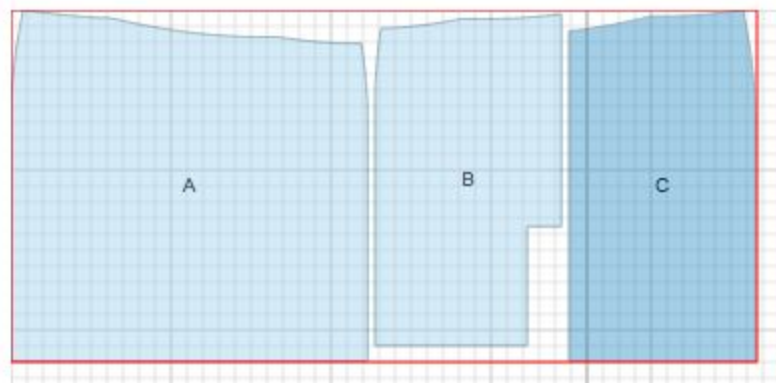
## Fusible interfacing:

1. Front Waistband Facing - cut 1 (B)
2. Back Waistband Facing - cut 1 (A)

## Lining:

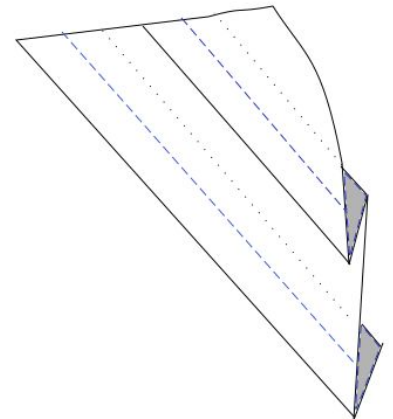
1. Front Lining - cut 1 (A)
2. Right Back Lining - cut 1 (B)
3. Left Back Lining - cut 1 (C)

\* The capital letters in brackets correspond to pattern blocks as seen in Online Fabric Estimator and in sample layouts on the right.



## INSTRUCTIONS:

1. Apply fusible interfacing to inner Front Facing, inner Back Facing, and to vent areas on the Right Back and Left Back on the wrong side.
2. Sew Front Inset 3 to Front, matching notches and center front line. Serge and press towards top.
3. Sew Front Inset 2 to Front Inset 3, matching notches and center front line. Serge and press towards top.
4. Sew Front Inset 1 to Front Inset 1, matching notches and center front line. Serge and press towards top. Treat as one piece (Front) in the future.
5. Sew Side front to Front, matching notches. Serge and press towards side.
6. Make and baste pleats on Side Front according to the scheme on the right (the bulk is folded towards side). Topstitch pleats at approximately 1 inch from fold (see the blue stitching lines in the scheme).
7. Sew Front Waistband to front, matching center line. Serge and press towards top.
8. Serge center back edges separately. Serge seam allowances of the vents separately.
9. Pin together Right Back and Left Back. Sew center back seam down to vent corner.
10. Press vent seam allowances to left side edge. Press right side of the vent at 1 cm and topstitch. Topstitch along vent marking.
11. Sew Back Waistband to Back, matching center line. Serge and press towards top.



- 
12. Serge each side edge separately.
  13. Sew right side seam and press open.
  14. Sew left side seam from notch for zipper to bottom. Press seam open, including opening for zipper.
  15. Sew in a lapped zipper according to zipper instructions that come with the packet.
  16. Sew right side seam on inner facings.
  17. Pin waistband facing, right sides together, to waistband. The side back left seam allowance should line up with the lapped zipper. Sew, and grade seam allowance. Understitch facing.
  18. Sew side seams and darts on lining. Leave an opening on left side for zipper at notch.
  19. Baste upper edge of lining to waistband facing, right sides together. Sew lining to edge of waistband facing. Slip-stitch zipper opening in lining to zipper tape on inside of skirt. Sew vertical edges of vent in lining to skirt vent. Place lining into skirt.
  20. Slip stitch short ends of facings to zipper tape. Sew hook and eye near waist on the inside of skirt.
  21. Stitch in the ditch along the right side seam of the waistband if desired.
  22. Hem skirt by hand or machine as desired.

---

*If you have any further questions regarding the pattern,*

*please don't hesitate to contact us at [info@sewist.com](mailto:info@sewist.com).*

*We are always happy to help!*

---