

PATTERN OVERVIEW

Made-to-measure pattern:

The pattern is drafted by our proprietary software specifically for your measurements that you supply when making an online order. We strongly recommend that you request a free preview to check the style lines and the amount of fabric needed before ordering the paid version.

Pattern features:

Fitted dress from woven fabric. Zipper is in back seam. The length is at center of kneecap, ease around bust is approx. 3", ease around waist is approx. 3.5", ease around hips approx. 1.5" depending on the size.

Recommendations on fabric: dress fabric, suiting fabric, bottom weight woven fabric.

You will also need: fusible interfacing, 1 dress zipper (the length in cm and inches is mentioned on the pattern piece).

Seam allowances:

If the pattern has double contour the seam allowances are included and are as follows: ½ inch on all seams, center back seam - ⅝ inch to allow for zipper installation, 1 inch on hem of skirt.

Attention! Seam allowances are NOT included by default and need to be added when laying out and cutting details if your pattern has single contour.

Fabric requirements:

To estimate fabric requirements, get a free preview for the pattern in your size at www.Lekala.net and use [Online Fabric Estimator](#). Alternatively you may print all the paper patterns and lay them out at the width of fabric you plan to use (usually 44 inches to 60 inches) to see how much fabric you will need. Don't forget to count pair parts and symmetrical parts.

When sewing the garment, pay attention to notches, they must match up.



CUTTING:

Lay pattern pieces out using the straight of grain line. Some pieces may be cut on the fold. This is noted on the pattern piece. Mark all notches and other design features such as darts, pleats etc. from the pattern onto your fabric.

Main fabric:

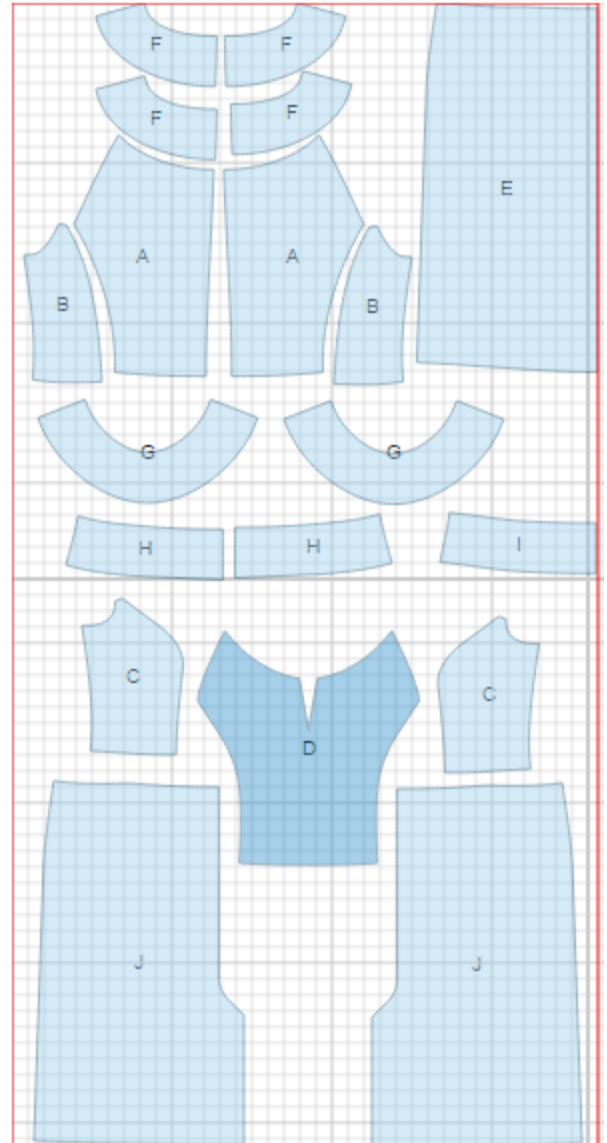
1. Center back- cut 2 (A)
2. Side back - cut 2 (B)
3. Side front - cut 2 (C)
4. Center front - cut 1 (D)
5. Front skirt - cut 1 on fold (E)
6. Back neck collar/facing - cut 4 (F)
7. Front neck collar/facing - cut 2 (G)
8. Back waistband - cut 2 (H)
9. Front waistband - cut 1 on fold (I)
10. Back skirt - cut 2 (J)

Lining:

1. Center back- cut 2 (A)
2. Side back - cut 2 (B)
3. Side front - cut 2 (C)
4. Center front - cut 1 (D)
5. Back waistband - cut 2 (H)
6. Front waistband - cut 1 on fold (I)

Fusible interfacing:

1. Back neck collar facing - cut 2 (F)
2. Front neck collar facing - cut 1 (G)

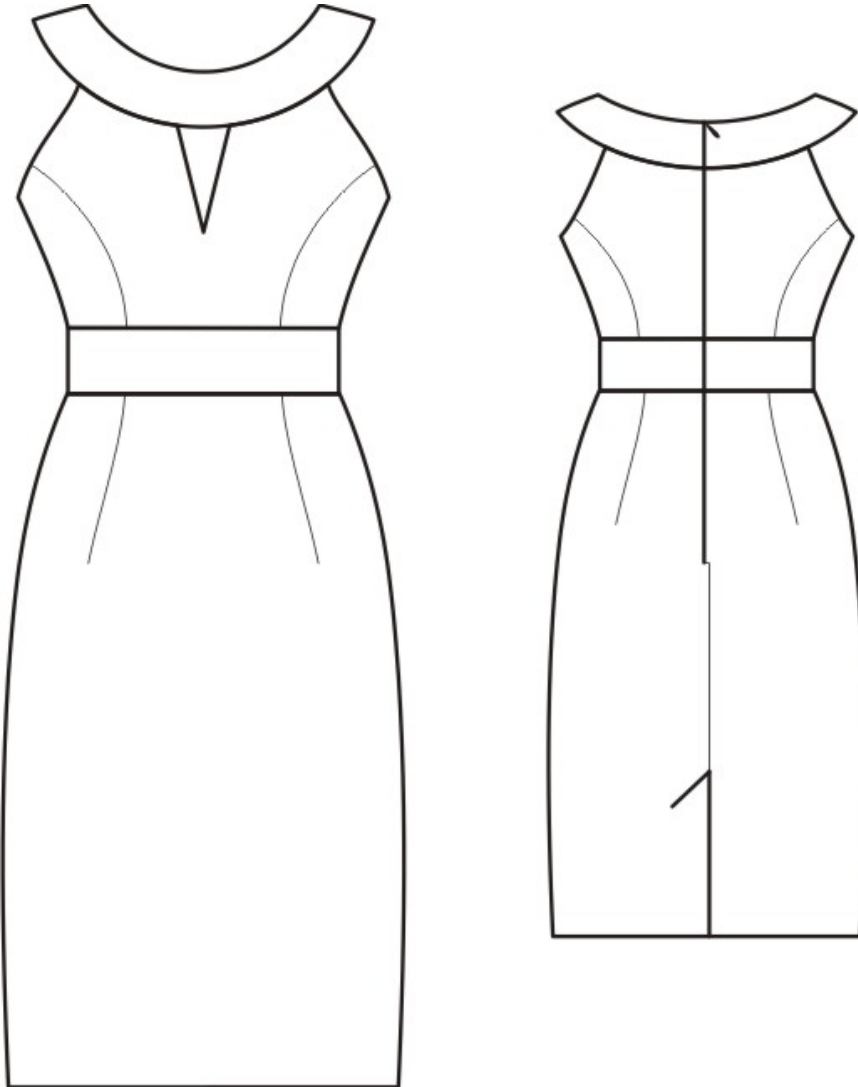


* The capital letters in brackets correspond to pattern blocks as seen in Online Fabric Estimator and in sample layouts on the right.

INSTRUCTIONS:

1. Apply fusible interfacing to listed pieces.
2. Sew shoulder seams of collars and collar facings. Press seams open. Pin collar and facings right sides together, and sew neckline edge. Clip into curves, turn right side out and press.
3. Sew side fronts to center front, and side backs to center backs. Serge and press seams toward center.
4. Sew back waistband to backs, serge and press seam toward waistband. Sew front waistband to front, serge and press seam toward waistband.
5. Sew side seams, serge and press seam toward back.
6. Sew lining the same way as main fabric. Pin lining to main fabric right sides together, and sew edges of the armhole and front slit, clip into curves and in corner of slit. Turn bodice right side out and press. Then treat as one piece. Serge center back edges separately.
7. Sew outer front collar to top edge of front, trim seam allowances and press toward collar. Sew outer back collar to top edge of back, trim seam allowances and press toward collar. Turn free edge of collar facing under, and topstitch into connecting seam.
8. Sew darts on back/front skirts. Press bulk towards center.
9. On left back skirt, along vertical vent edge, cut off 5 cm. Apply fusible interfacing to wrong side of the vent on both back pieces. On right side, mark center seam line (vent fold-line). Press left part along vent fold line. On right part press to wrong side only the allowance of right side of vent (6 cm). Match backs on center seam and fasten on upper edge of vent. Serge center back seam separately on each side. Serge vent allowances. Sew center back seam from zipper mark to vent corner. Trim corner of vent seam allowance on right part. Press center seam open, press vent allowances and fasten them on right side with machine stitch.
10. Sew side seams of skirt. Serge and press towards back.
11. Sew skirt to waistband. Serge and press seam towards waistband.
12. Install zipper.
13. Serge lower edge of dress, turn under, press, and slipstitch.

TECHNICAL DRAWING:



*If you have any further questions regarding the pattern,
please don't hesitate to contact us at info@sewist.com.*

We are always happy to help!