

PATTERN OVERVIEW

Made-to-measure pattern:

The pattern is drafted by our proprietary software specifically for your measurements that you supply when making an online order. We strongly recommend that you request a free preview to check the style lines and the amount of fabric needed before ordering the paid version.

Pattern features:

Dress with princess seams, straight knee length skirt, front decorative closure, zipper in back seam. Ease around waist is approx. 1", ease around hips approx. 1.5" depending on the size.

Recommendations on fabric: dress fabric, suiting fabric, bottom weight woven fabric.

You will also need: fusible interfacing, invisible zipper.

Seam allowances:

If the pattern has double contour the seam allowances are included and are as follows: 1/2 inch on all edges. hem of dress – 1.5 inch.

Attention! Seam allowances are NOT included by default and need to be added when laying out and cutting details if your pattern has single contour.

Fabric requirements:

To estimate fabric requirements, get a free preview for the pattern in your size at www.Lekala.net and use [Online Fabric Estimator](#). Alternatively you may print all the paper patterns and lay them out at the width of fabric you plan to use (usually 44 inches to 60 inches) to see how much fabric you will need. Don't forget to count pair parts and symmetrical parts.

When sewing the garment, pay attention to notches, they must match up.

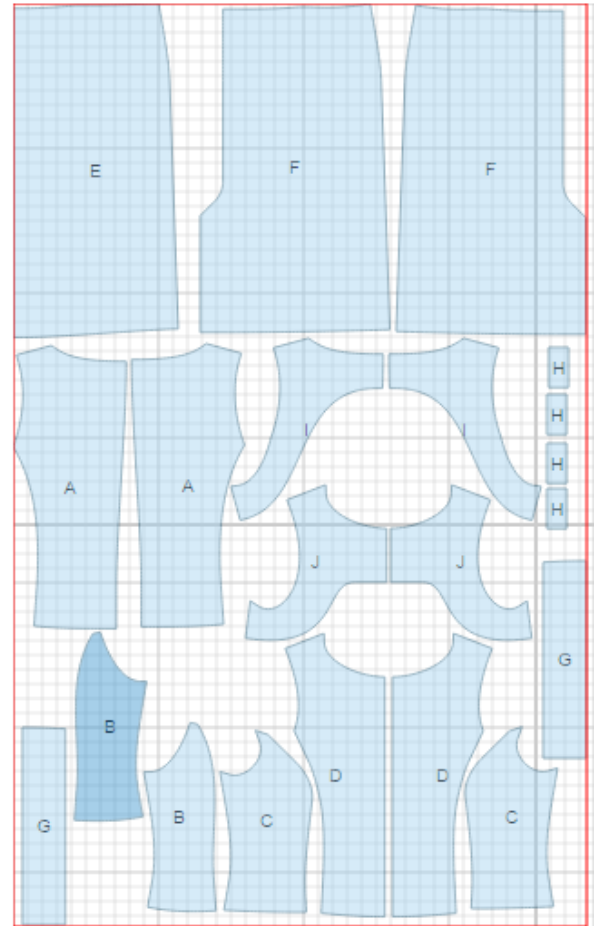


CUTTING:

Lay pattern pieces out using the straight of grain line. Some pieces may be cut on the fold. This is noted on the pattern piece. Mark all notches and other design features such as darts, pleats etc. from the pattern onto your fabric.

Main fabric:

1. Center back - cut 2 (A)
2. Side back - cut 2 (B)
3. Side front - cut 2 (C)
4. Center front - cut 2 (D)
5. Front skirt - cut 1 on fold (E)
6. Back skirt - cut 2 (F)
7. Center front facing - cut 2 (G)
8. Loop - cut 4 (H)
9. Back neck facing - cut 2 (I)
10. Front neck facing - cut 2 (J)



Fusible interfacing:

1. Center front facing - cut 2 (G)
2. Back neck facing - cut 2 (I)
3. Front neck facing - cut 2 (J)

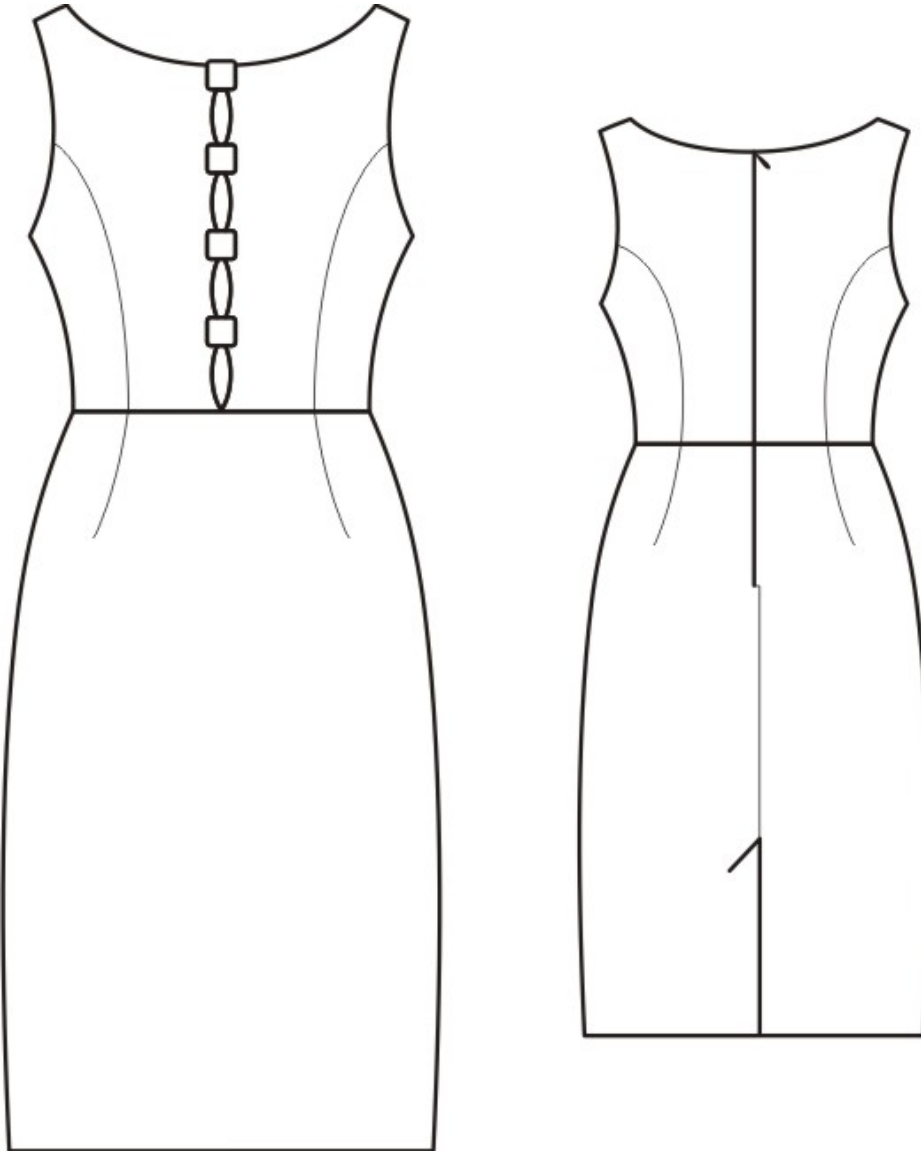
* The capital letters in brackets correspond to pattern blocks as seen in Online Fabric Estimator.

INSTRUCTIONS:

1. Apply fusible interfacing to listed pieces.
2. Sew center backs to side backs, serge and press seams towards center.
3. Sew darts on back skirt pieces and press them towards center.

4. Serge center back edges and vent edges separately. Sew center back seam from zipper mark down to vent. Press seam open, pressing zipper slit. Press vent seam allowances towards left side seam. Press right side of the vent at 1 cm and topstitch. Fasten vent seam allowances with machine stitch.
5. Sew center front to side fronts, serge and press seams towards center.
6. Sew darts on front skirt and press them towards center.
7. Sew front neck facings to front facings. Press seam open and serge outer edge of facing. Place facing and front right sides together and sew along neckline, center seam, and armhole. Clip into seam on curves, trim in corners, turn facing to wrong side and press.
8. Fold loops in half right sides together,, and sew. Turn out, press and sew to front according to technical drawing.
9. Serge outer edge of each back neck facing. Sew back neck facing to back along neckline and armhole. Clip into seam on curves.
10. Insert center front between center back and facing matching shoulder seams and sew.
11. Turn pieces right side out and press back facing.
12. Sew side seams of the bodice and facings, serge and press seam towards back. Baste armhole facing to side seam.
13. Sew side seams of skirt, serge and press towards center.
14. Sew bodice to skirt matching side seams. Darts should match front seams. Serge and press seam upwards.
15. Sew in a zipper from neck to mark on skirt matching waistline. Baste back neck facing to zipper tape.
16. Serge lower edge of skirt, fold to wrong side, press and slipstich.

TECHNICAL DRAWING:



*If you have any further questions regarding the pattern,
please don't hesitate to contact us at info@sewist.com.
We are always happy to help!*