

## PATTERN OVERVIEW

### Made-to-measure pattern:

The pattern is drafted by our proprietary software specifically for your measurements that you supply when making an online order. We strongly recommend that you request a free preview to check the style lines and the amount of fabric needed before ordering the paid version.

### Pattern features:

Straight skirt with shaped waistband, zipper in back center seam. The skirt sits at natural waistline, the length is at center of kneecap, ease around waist is approx.  $\frac{5}{8}$ " , ease around hips approx. 1.5" depending on the size.

**Recommendations on fabric:** wool or semi-wool, dress fabric, suiting fabric, bottom weight woven fabric.

**You will also need:** fusible interfacing, 1 zipper (the length in cm and inches is mentioned on the pattern piece, 2 hooks and eyes.

### Seam allowances:

If the pattern has double contour the seam allowances are included and are as follows:  $\frac{1}{2}$  inch on all seams, 1.5 inch on hem of skirt,  $\frac{5}{8}$  inch on center back seam for zipper.

Attention! Seam allowances are NOT included by default and need to be added when laying out and cutting details if your pattern has single contour.

### Fabric requirements:

To estimate fabric requirements, get a free preview for the pattern in your size at [www.Lekala.net](http://www.Lekala.net) and use [Online Fabric Estimator](#). Alternatively you may print all the paper patterns and lay them out at the width of fabric you plan to use (usually 44 inches to 60 inches) to see how much fabric you will need. Don't forget to count pair parts and symmetrical parts.

When sewing the garment, pay attention to notches, they must match up.



## CUTTING:

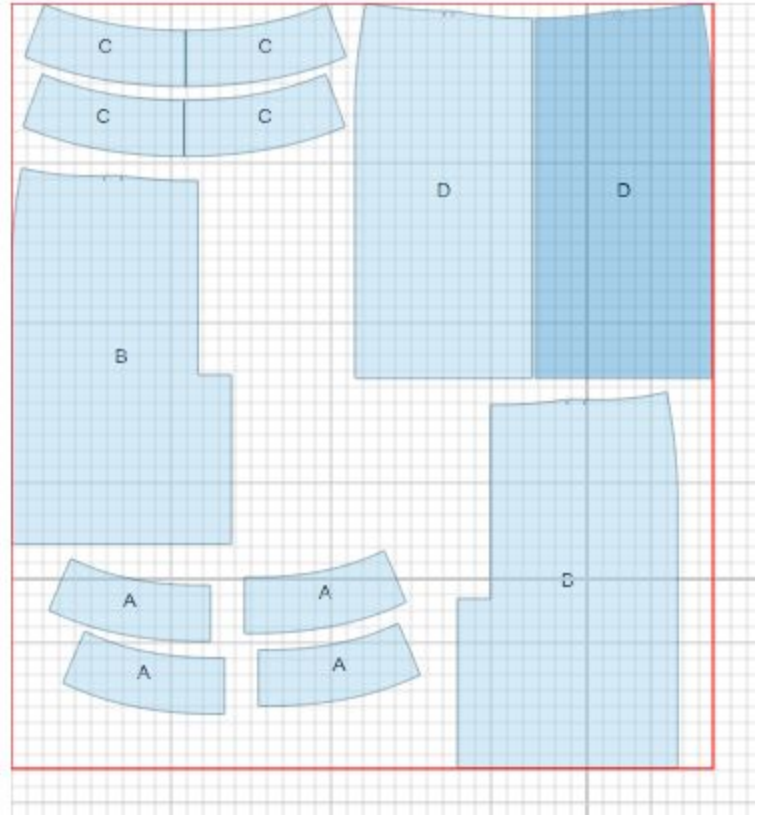
Lay pattern pieces out using the straight of grain line. Some pieces may be cut on the fold. This is noted on the pattern piece. Mark all notches and other design features such as darts, pleats etc. from the pattern onto your fabric.

### Main fabric:

1. Front - cut 1 on fold ( D )
2. Back - cut 2 ( B )
3. Front Waistband - cut 1 on fold ( C )
4. Front Waistband Facing - cut 1 on fold ( C )
5. Back Waistband - cut 2 ( A )
6. Back Waistband Facing - cut 2 ( A )

### Fusible interfacing:

1. Back Waistband Facing - cut 2 ( A )
2. Front Waistband Facing - cut 1 on fold ( C )



\* The capital letters in brackets correspond to pattern blocks as seen in Online Fabric Estimator and in sample layouts on the right.

## INSTRUCTIONS:

1. Sew darts on Backs. Press depths towards center.
2. Serge center back edges separately. Serge seam allowances of the vents separately.
3. Pin together Right Back and Left Back. Sew center back seam from notch for zipper down to vent corner.
4. Press vent seam allowances to left side edge. Press right side of the vent at 1 cm and topstitch. Topstitch along vent marking.

- 
5. Press back center seam open, including opening for zipper. Sew in lapped zipper according to zipper instructions that come with the packet.
  6. Apply fusible interfacing to front waistband facing and back waistband facing.
  7. Sew side seams on waistbands. Press open. Sew side seams of waistband facings. Press open. Serge lower edge of waistband facing.
  8. Pin waistband, right sides together, to waistline, matching side seams and center front and back lines. The seam allowances of waistband should line up with the lapped zipper. Sew, and grade seam allowance.
  9. Pin waistband facing, right sides together, to waistband along top edge and sew. Clip into curves and trim seam. Turn facing toward inside and press.
  10. Slip stitch facings to seam allowances along side seams. If desired, pin waistbands and waistband facings together and stitch-in-the-ditch along waistband seam.
  11. Slip stitch short ends of facings to zipper tape. Sew hooks and eyes near waist on the inside of skirt.
  12. Serge lower edge of skirt, turn under, press, and slipstitch.
- 
- \_\_\_\_\_
-

TECHNICAL DRAWING:

