

PATTERN OVERVIEW

Made-to-measure pattern:

The pattern is drafted by our proprietary software specifically for your measurements that you supply when making an online order. We strongly recommend that you request a free preview to check the style lines and the amount of fabric needed before ordering the paid version.

Pattern features:

Skirt with flounce in the back. The length is at center of kneecap in the front, slightly lower in the back, ease around waist is approx. 1", ease around hips approx. 1.5" depending on the size.

Recommendations on fabric: skirt fabric, suiting fabric, bottom weight woven fabric.

You will also need: fusible interfacing, invisible skirt zipper.

Seam allowances:

If the pattern has double contour the seam allowances are included and are as follows: $\frac{5}{8}$ inch on center back seam for zipper, $\frac{1}{2}$ inch on other seams, 1.5 inch on hem of skirt.

Attention! Seam allowances are NOT included by default and need to be added when laying out and cutting details if your pattern has single contour.

Fabric requirements:

To estimate fabric requirements, get a free preview for the pattern in your size at www.Lekala.net and use [Online Fabric Estimator](#). Alternatively you may print all the paper patterns and lay them out at the width of fabric you plan to use (usually 44 inches to 60 inches) to see how much fabric you will need. Don't forget to count pair parts and symmetrical parts.

When sewing the garment, pay attention to notches, they must match up.



CUTTING:

Lay pattern pieces out using the straight of grain line. Some pieces may be cut on the fold. This is noted on the pattern piece. Mark all notches and other design features such as darts, pleats etc. from the pattern onto your fabric.

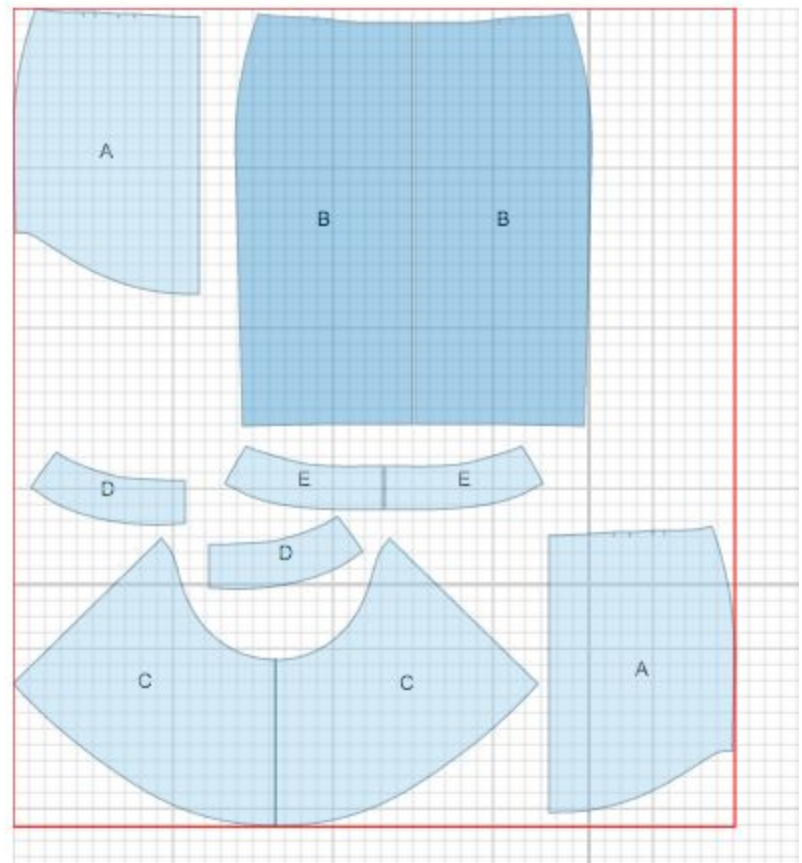
Main fabric:

1. Front - cut 1 on fold (B)
2. Upper back - cut 2 (A)
3. Lower back - cut 1 on fold (C)
4. Front facing - cut 1 on fold (E)
5. Back facing - cut 2 (D)

Fusible interfacing:

1. Back Facing - cut 2 (D)
2. Front Facing - cut 1 on fold (E)

* The capital letters in brackets correspond to pattern blocks as seen in Online Fabric Estimator and in sample layouts on the right.



INSTRUCTIONS:

1. Sew darts on front. Press depths towards center.
2. Sew darts on upper backs. Press depths towards center.
3. Serge center seams on upper backs separately. Sew center back seam from bottom up to notch for zipper. Sew in zipper.
4. Sew lower back to upper back. Serge seam and press towards bottom.
5. Sew side seams, serge and press towards back.

6. . Sew side seams on facings and press seam apart. Serge outer edge.
7. Pin facing right sides together to skirt waist and stitch. Turn facing under, straighten and press.
Slipstitch facing to side seams and to zipper tape.
8. Serge hem, turn under, press, and slip-stitch.

TECHNICAL DRAWING:

