

Recommendations on fabric: light-weight double-sided well draping woolen fabric.

You will also need: lining, fusible interfacing, 8 buttons, invisible zipper, trimming for peplum edge (the length is shown on front pattern piece).

Seam allowances: on hem – 2.0 cm, other seams – 1.0 cm.

**Note on seam allowances:**

- If the pattern has double contour the seam allowances are included. They are 1 cm unless specified otherwise.
- If the pattern has single contour, the seam allowances are NOT included and need to be added when laying out the pattern.

**Note on length of fabric:**

*Attention! The amount of fabric needed for your pattern is not included. It will depend on the selected pattern size, the width, and design of the fabric you plan to use. First, print all the paper patterns and lay them out at the width of fabric you plan to use (usually from 90 to 150 cm). Measure how much fabric you will need. Don't forget to account for pieces that need to be cut multiple times and pieces that are cut on the fold.*



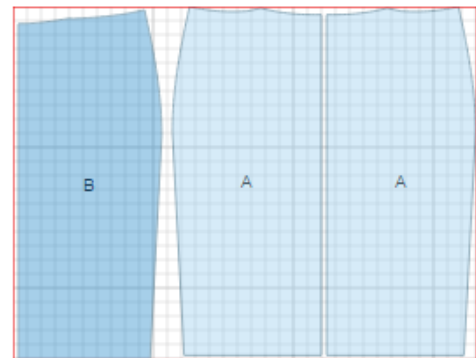
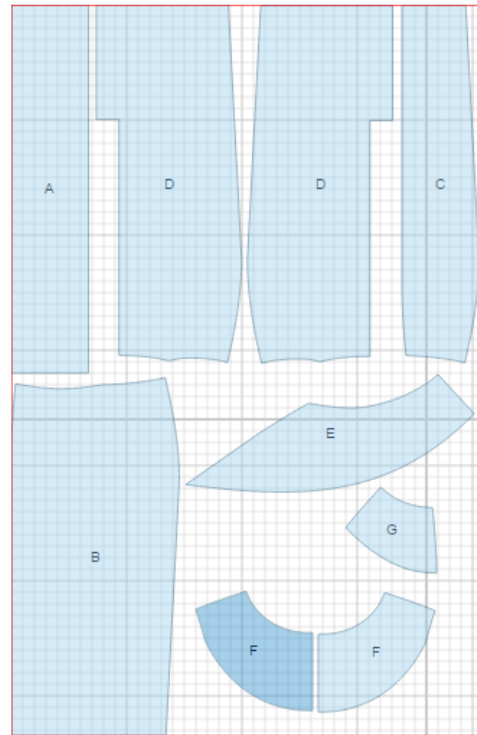
## CUTTING:

### Main fabric:

1. Right front – cut 1 (B)
2. Left front – cut 1 (C)
3. Back – cut 2 (D)
4. Right front peplum – cut 1 (E)
5. Left front peplum – cut 1 (G)
6. Back peplum – cut 2 (F)
7. Waistband – cut 1 (A)

### Fusible interfacing:

1. Waistband – cut 1



### Lining:

1. Front – cut 1 on fold (B)
2. Back – cut 2 (A)

---

**INSTRUCTIONS:**

1. Apply fusible interfacing to waistband.
2. Sew darts on backs and fronts, press seams toward center.
3. Sew side seams. Serge seams and press toward back.
4. Sew side seams of peplum. Serge seams and press toward back. Sew trim to lower edge of the peplum. Place peplum on skirt matching upper edge and center seam.
5. Sew center front seam. Serge and press seam.
6. Sew darts on lining pieces. Press darts toward center. Sew center back seam from zipper mark down. Press seam open. Sew side seams, and press toward back. Serge lower edge of lining, turn under and topstitch.
7. Pin skirt, peplum, and lining together along upper edge and baste.
8. Serge edges of center backs and center back peplums, serging the vent at the same time. Sew center back seam from mark down to vent edge. Press apart seam, pressing zipper slit. Press vent seams toward left side seam. Press right side of vent at 1 cm and topstitch. Fasten vent seams together with machine stitch. Sew in zipper.
9. Sew waistband to upper edge of the skirt. Stitch ends of waistband. Trim seams in corners and turn out. Turn inner edge of waistband under and topstitch into connecting seam. Press waistband.
10. Serge lower edge of skirt, press to wrong side and topstitch.
11. Mark and make a buttonhole in waistband. Sew buttons on waistband and vent according to marks.

TECHNICAL DRAWING:

