

## PATTERN OVERVIEW

### Made-to-measure pattern:

The pattern is drafted by our proprietary software specifically for your measurements that you supply when making an online order. We strongly recommend that you request a free preview to check the style lines and the amount of fabric needed before ordering the paid version.

### Pattern features:

Midi straight skirt with straight waistband, pleated front, zipper in center back seam. The skirt sits at natural waistline, the length is below knee, ease around waist is approx. 1", ease around hips approx. 1.5" depending on the size.

**Recommendations on fabric:** wool or semi-wool, dress fabric, suiting fabric, bottom weight woven fabric.

**You will also need:** fusible interfacing, 1 zipper (the length in cm and inches is mentioned on the pattern piece, 1 button, 1 hook and eye.

### Seam allowances:

If the pattern has double contour the seam allowances are included and are as follows: ½ inch on all seams, center back seam - ¾ inch to allow for zipper installation, 1.5 inch on hem of skirt.

Attention! Seam allowances are NOT included by default and need to be added when laying out and cutting details if your pattern has single contour.

### Fabric requirements:

To estimate fabric requirements, get a free preview for the pattern in your size at [www.Lekala.net](http://www.Lekala.net) and use [Online Fabric Estimator](#). Alternatively you may print all the paper patterns and lay them out at the width of fabric you plan to use (usually 44 inches to 60 inches) to see how much fabric you will need. Don't forget to count pair parts and symmetrical parts.

When sewing the garment, pay attention to notches, they must match up.



## CUTTING:

Lay pattern pieces out using the straight of grain line. Some pieces may be cut on the fold. This is noted on the pattern piece. Mark all notches and other design features such as darts, pleats etc. from the pattern onto your fabric.

## Main fabric:

1. Decorative Band - cut 1 (A)
2. Side - cut 1 (B)
3. Back - cut 2 (C)
4. Front - cut 1 (D)
5. Waistband (E)

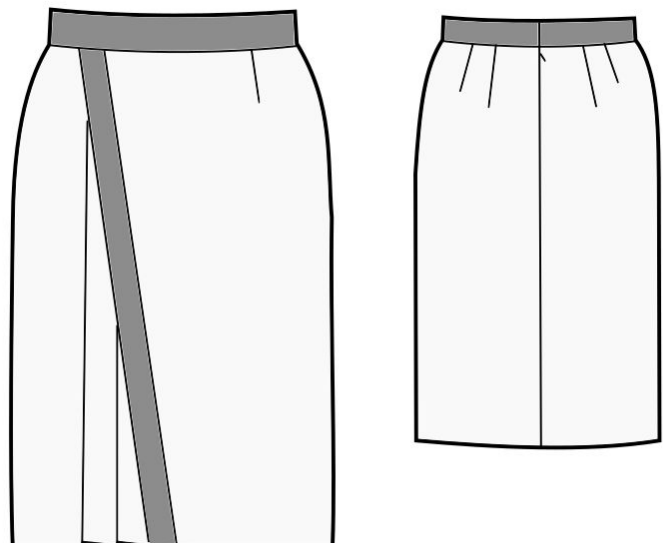
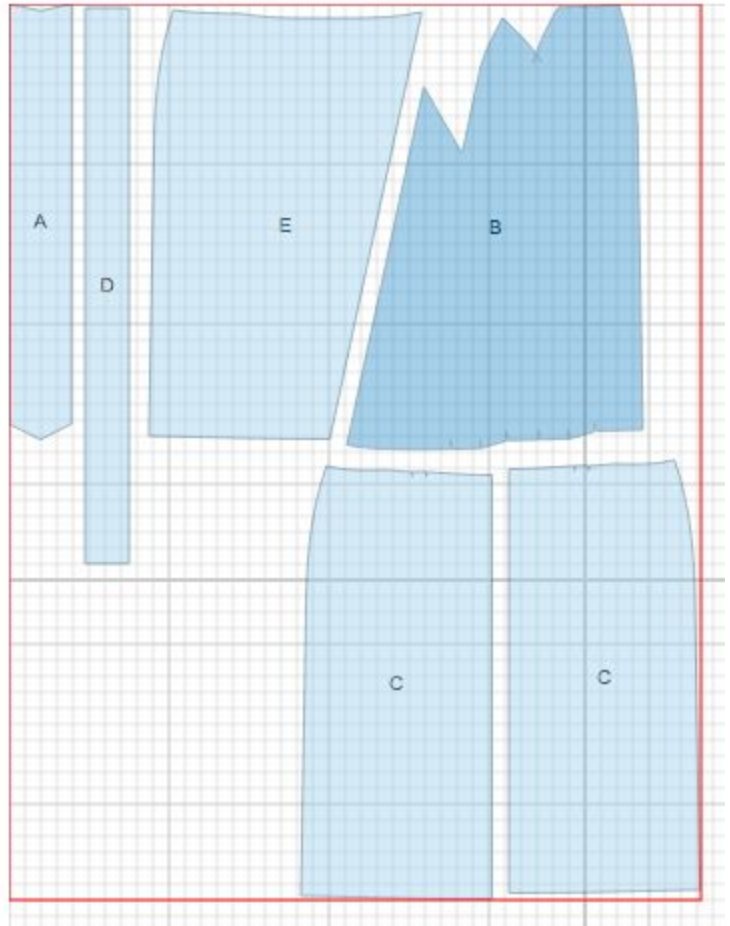
(Contrasting fabric can be used for the Decorative Band and Waistband)

## Fusible interfacing:

1. Waistband (E)

\* The capital letters in brackets correspond to pattern blocks as seen in Online Fabric Estimator and in sample layout on the right.

## Technical drawing:



---

## INSTRUCTIONS:

1. Apply fusible interfacing to Waistband on the wrong side.
  2. Make and baste pleats on Side according to notches and technical drawing.
  3. Press decorative band in half lengthwise. Pin Side to Front, placing band in between. Sew, serge and press towards Side.
  4. Sew darts on Back, press towards center.
  5. Serge side edges separately. Sew side seams and press open.
  6. Sew center back seam from hem to notch for zipper. Press seam open, including opening for zipper.
  7. Sew in a lapped zipper according to zipper instructions that come with the packet.
  8. Sew waistband to waistline edge, right sides together, matching notches. The right seam allowance should line up with the lapped zipper and the left side should extend enough so that the waistband can overlap. Press the seam allowance of the unstitched long edge under.
  9. Fold waistband along center line at the ends, right sides together, and sew short ends. Trim corners. Pull corners out so they are square.
  10. Press seam toward waistband. Trim and grade seams as needed. Press along center line so that waistband-facing is toward inside and turned edge meets up with the edge of the seamline. Slip-stitch in place. Stitch in the ditch along edges of the outside waistband if desired.
  11. Hem skirt by hand or machine as desired.
-