

Recommendations on fabric: natural or mixed mid to heavy-weight blouse fabrics.

You will also need: invisible zipper, fusible interfacing.

Seam allowances: on hem and lower edge of sleeve – 2.0 cm, other seams – 1.0 cm.

Note on seam allowances:

- If the pattern has double contour the seam allowances are included. They are 1 cm unless specified otherwise.
- If the pattern has single contour, the seam allowances are NOT included and need to be added when laying out the pattern.

Note on length of fabric:

Attention! The amount of fabric needed for your pattern is not included. It will depend on the selected pattern size, the width, and design of the fabric you plan to use. First, print all the paper patterns and lay them out at the width of fabric you plan to use (usually from 90 to 150 cm). Measure how much fabric you will need. Don't forget to account for pieces that need to be cut multiple times and pieces that are cut on the fold.



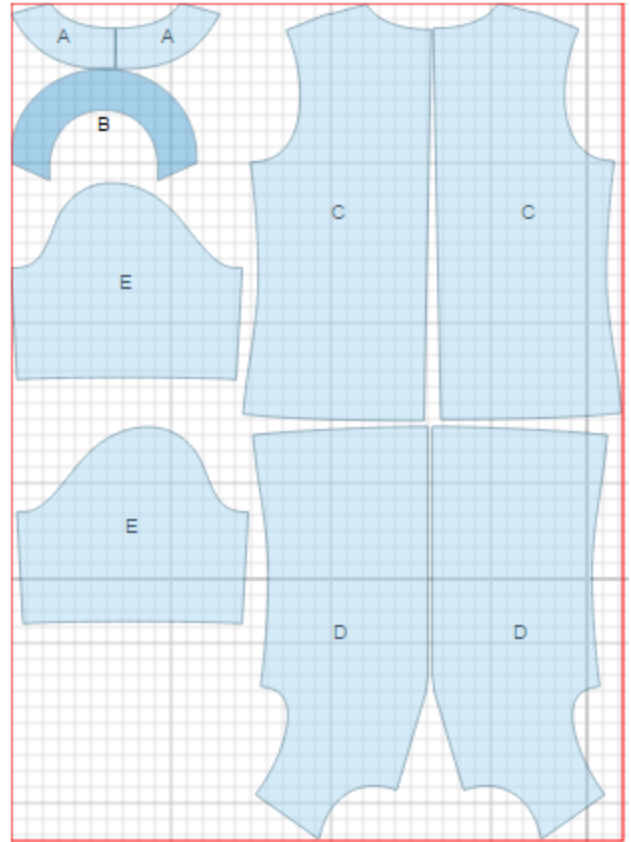
CUTTING:

Main fabric:

1. Front – cut 2 (D)
2. Back – cut 2 (C)
3. Sleeve – cut 2 (E)
4. Back neck facing – cut 2 (A)
5. Front neck facing – cut 1 (B)

Fusible interfacing:

1. Back neck facing – cut 2
2. Front neck facing – cut 1



INSTRUCTIONS:

1. Apply fusible interfacing to listed pieces.
2. Sew darts on backs. Press darts towards center. Serge separately center back edges. Sew center back seam from zipper mark down to hem. Sew in zipper.
3. Sew darts on fronts. Press darts downwards. Sew center front seam. Serge seam and press toward left.
4. Sew shoulder and side seams. Serge seams and press toward back.
5. Sew sleeve seams. Serge seam and press to back. Make a gathering stitch along sleeve cap for adjusting ease. Sew in sleeve matching notches and adjusting ease. Serge seam.
6. Sew facing shoulder seams. Press seams open. Serge lower edge of facings. Place facing onto neck, right sides together, and stitch neckline. Clip seam on curves, turn facing to wrong side and press. Understitch seam allowance onto facing at 0.2 cm from the seam. Tack facing ends to zipper tape.
7. Serge lower edges of blouse and sleeves. Turn under, press, and topstitch.

TECHNICAL DRAWING:

