

## Sewing Pattern — Tunic 4498

Recommendations on fabric: natural or mixed dress fabric of contrast colours.

You will also need: invisible zipper, fusible interfacing, a button.

Seam allowances: all seams - 1 cm, on hem and outer edge of fly panel – 2 cm.

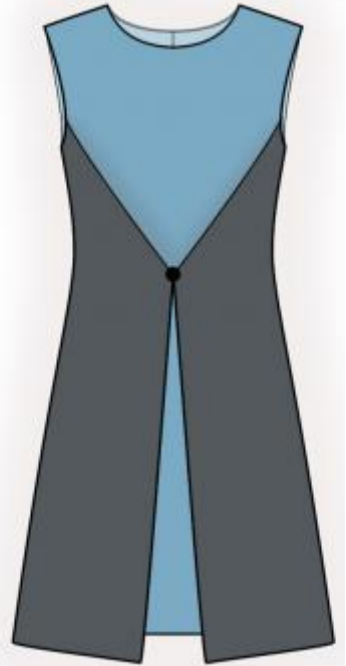
### **Note on seam allowances:**

- If the pattern has double contour the seam allowances are included. They are 1 cm unless specified otherwise.

- If the pattern has single contour, the seam allowances are NOT included and need to be added when laying out the pattern.

### **Note on length of fabric:**

*Attention! The amount of fabric needed for your pattern is not included. It will depend on the selected pattern size, the width, and design of the fabric you plan to use. First, print all the paper patterns and lay them out at the width of fabric you plan to use (usually from 90 to 150 cm). Measure how much fabric you will need. Don't forget to account for pieces that need to be cut multiple times and pieces that are cut on the fold.*



### **CUTTING:**

#### Main fabric:

1. Center back – cut 2
2. Front — cut 1
3. Back facing — cut 2
4. Front facing — cut 1

#### Main fabric 1:

1. Side back – cut 2
2. Fly panel – cut 2

#### Fusible interfacing:

1. Back facing – cut 2
2. Front facing – cut 1

## **INSTRUCTIONS:**

1. Apply fusible interfacing to facings.
2. Sew side and front backs, press seams toward center and serge.
3. Serge center back edges separately. Sew center back edge from zipper mark down. Press apart seam. Sew in zipper.
4. Sew darts on front, press them upward. Serge lower edge of front, press to wrong side and topstitch.
5. Serge outer edge of fly panel, press to wrong side and topstitch. Place fly panel onto front and pin on side edge and armhole. Then sew front as one detail.
6. Sew side and shoulder edges. Press seam onto back and serge.
7. Sew side and shoulder edges of facings. Press seam allowance apart. Serge center and outer edges of facing. Place facing and tunic right sides together and stitch on neckline. Clip on curves, turn facing to wrong side, straighten and press. Stitch armhole in two steps: first back, then front. Clip on curves, turn out, straighten and press. Tack facing to the garment on side seams. Tack facing to zipper tape.
8. Serge hem, press to wrong side and topstitch.
9. Cut a bias tape of 3x7 cm. Fold bias tape in half lengthwise and stitch at 0.3 cm from the fold. Trim seam and turn detail right side out. Regulate the length of the loop and sew it to right fly panel. Sew button on left fly panel.

## **TECHNICAL DRAWING:**

