

## Sewing Pattern — Coat 4491

Recommendations on fabric: natural or mixed fabric suitable for coats.

You will also need: hook, trim band, bias tape, lining, fusible interfacing. The length of trim band and bias tape is shown on the pattern.

If the pattern has a double line around it, the seam allowances are included.

**Note:** By default, seam allowances are NOT included (single line) and will need to be added when laying out and cutting details.

Seam allowance: pocket sacking and welt – 2.0 cm, all other seams – 1 cm

Attention! First of all, please print all the paper patterns and lay them out at the width of fabric you plan to use (usually from 90 to 150 cm) to see how much fabric you will need. Don't forget to take into account pieces to be duplicated or cut on a fold.

When sewing the garment, pay attention to notches, they must match up with corresponding pieces.

### **CUTTING:**

#### Main fabric:

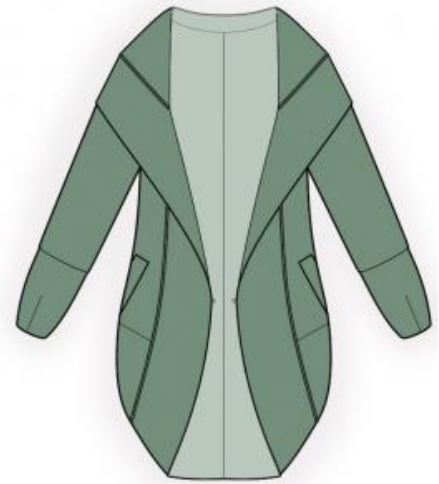
1. Back - cut 2
2. Front — cut 2
3. Sleeve — cut 2
4. Cuff – cut 2
5. Hood – cut 2
6. Piping – cut 2
7. Welt – cut 2

#### Lining:

1. Big sacking – cut 2
2. Small sacking – cut 2

#### Fusible interfacing:

1. Welt – cut 2



## **INSTRUCTIONS:**

1. Sew darts on fronts. Press darts down.
2. Apply fusible interfacing to welts. Mark pocket location. Apply fusible interfacing to pocket opening. Press welt in half lengthwise right side out. Topstitch small sacking onto inner side of welt. Sew welt to front on lower line of pocket marking. Sew big sacking to front on upper line of pocket marking. End stitch at short lines of marking. Cut a pocket opening through. At 1 – 1,5 cm from the ends make slanting cuts to corners (dog's tail). Turn welt and big sacking through the given opening wrong side out. Fasten ends of the pocket from wrong side with double back stitch close to corners. Sew and serge pockets' edges.
3. Sew center back seam. Serge and press seam to left side.
4. Sew shoulder edges. Serge and press seam onto back.
5. Sew hood edge. Serge and press seam to left side. Sew hood into the neck. Serge seam.
6. Sew darts on cuffs. Cut darts off with serger. Sew cuff to sleeve. Serge and press seam onto sleeve. Sew sleeves into armholes. Serge seams.
7. Sew side seam and sleeve seam in one step. Serge and press seam toward back.
8. Sew trim band on coat contour. Sew together edges of piping to get a ring. Fold in half lengthwise and press. Place onto right side of the coat and sew on contour. Unfold bias tape on two sides and lay onto the seam. Sew the bias tape. Fold seam allowance and bias tape to main detail and topstitch, covering the seam.
9. Sew the hook at cross mark.

## **TECHNICAL DRAWING:**

