

Recommendations on fabric: lightweight natural/mixed fabric suitable for coats.

You will also need: fusible interfacing; lining; separating zipper; shoulder pads; sleeve heads.

Seam allowances: all seams 1 cm. Seam allowance for hem of garment and hem of sleeve - 3.0 cm.

**Note on seam allowances:**

- If the pattern has double contour the seam allowances are included. They are 1 cm unless specified otherwise.
- If the pattern has single contour, the seam allowances are NOT included and need to be added when laying out the pattern.



**Note on length of fabric:**

Attention! The amount of fabric needed for your pattern is not included. It will depend on the selected pattern size, the width, and design of the fabric you plan to use. First, print all the paper patterns and lay them out at the width of fabric you plan to use (usually from 90 to 150 cm). Measure how much fabric you will need. Don't forget to account for pieces that need to be cut multiple times and pieces that are cut on the fold.

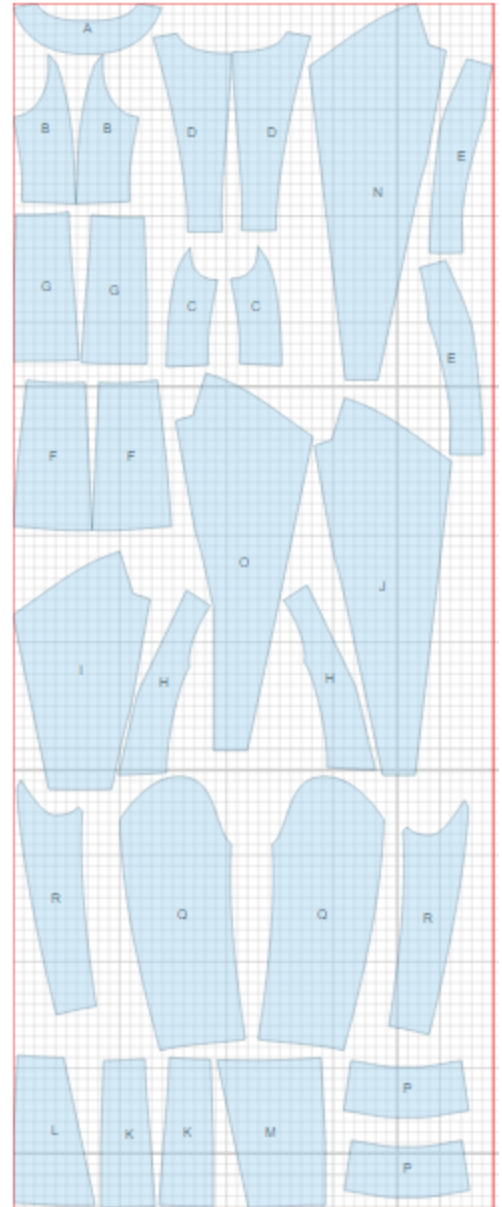
## CUTTING:

### Main fabric:

1. Center upper back – cut 2 (D)
2. Center side upper back – cut 2 (E)
3. Side upper back – cut 2 (B)
4. Center lower back – cut 2 (F)
5. Side lower back – cut 2 (G)
6. Side upper front – cut 2 (C)
7. Center upper front – cut 2 (H)
8. Center upper front right – cut 1 (I)
9. Center lower front - cut 1 (L)
10. Side lower front – cut 2 (K)
11. Center lower front right – cut 1 (M)
12. Center front left – cut 1 (J)
13. Stand-up collar – cut 2 (P)
14. Left front facing – cut 1 (N)
15. Right front facing – cut 1 (O)
16. Back neck facing – cut 1 (A)
17. Upper sleeve – cut 2 (Q)
18. Lower sleeve – cut 2 (R)

### Lining:

1. Center upper back – cut 2 (D)
2. Center side upper back – cut 2 (E)
3. Side upper back – cut 2 (B)
4. Center lower back – cut 2 (F)
5. Side lower back – cut 2 (G)
6. Side upper front – cut 2 (C)
7. Center upper front – cut 2 (H)
8. Side lower front – cut 2 (K)
9. Center lower front right – cut 1 (M)
10. Center lower front – cut 1 (L)
11. Upper sleeve – cut 2 (Q)
12. Lower sleeve – cut 2 (R)



Note: lining for back and front are cut from the same pattern, excluding the width of back neck facing and front facings.

Fusible interfacing:

1. Stand collar – cut 1
2. Left Front Facing – cut 1
3. Right Front Facing – cut 1
4. Back neck facing – cut 1

**INSTRUCTIONS:**

1. Apply fusible interfacing to front facings, back neck facing, stand-up collar and seam allowances for hem of garment and hem of sleeve. Fusible interfacing should be overlapping the marked line of the bottom edge by 1 cm.

2. Sew upper side backs to upper center back, press seams open.. Sew center seam on upper back, press seams open. Sew side lower backs to center lower back, press seams open. Sew center seam on lower back and press seam open. Sew upper back to lower back, press seams open. Sew outer stand-up collar to neckline, press seam open.

3. Right front - sew upper side front to upper center front, press seams open. Sew side lower front to center lower front, press seam open. Sew upper front to lower front, press seam open.

4. Left front - sew side upper front to center upper front, press seams open. Sew side lower front to center lower front, press seams open. Sew upper front to lower front, press seam open. Sew center front to side front, inserting left part of zipper between notches.

5. Sew side seams and shoulder seams together with seam along the edge of stand up collar, press seam open.

6. Sew inner stand-up collar to neckline of facing, press seam open. Sew side seams of back neckline facing and front facings, press seams open.

7. Pin facings onto front, right sides together, and sew along the front facing edge and edge of stand-up collar, inserting right side of zipper. Trim away corners. Turn facings and stand-up collar right side out, straighten seams, press.

8. Sew and press open elbow sleeve seam. Press hem of sleeve. Sew and press open front sleeve seam.

9. Sew sleeves into armholes matching notches, adjusting ease on sleeve cap. Sew shoulder pads and sleeve heads to garment.

10. Sew seams on lining and sew in sleeves, in the same way as pieces from main fabric, leaving an opening for turning in front right sleeve seam.

11. Sew lining to inner edges of front facings and to back neckline facing. Baste together seam allowance along seams of stand-up collars close to the seam line. Sew lower edges of front facings to front. Trim away corners. Turn facings right side out, straighten seams. Press lower edge of garment onto wrong side. Sew lining to lower edge of garment and lower edge of sleeve. Turn jacket right side out through the opening in seam. Sew the opening closed.

12. Sew a decorative stitch along the front and stand-up collar at 1 cm from edge.

**TECHNICAL DRAWING:**

