

Recommendations on fabric: double sided natural/mixed fabric suitable for dresses.

You will also need: fusible interfacing; dress zipper; decorative flower.

Seam allowances: all seam allowances 1 cm; seam allowance for hem of dress and seam allowance for hem of sleeve — 1.2 cm.

Note on seam allowances:

- If the pattern has double contour the seam allowances are included. They are 1 cm unless specified otherwise.
- If the pattern has single contour, the seam allowances are NOT included and need to be added when laying out the pattern.

Note on length of fabric:

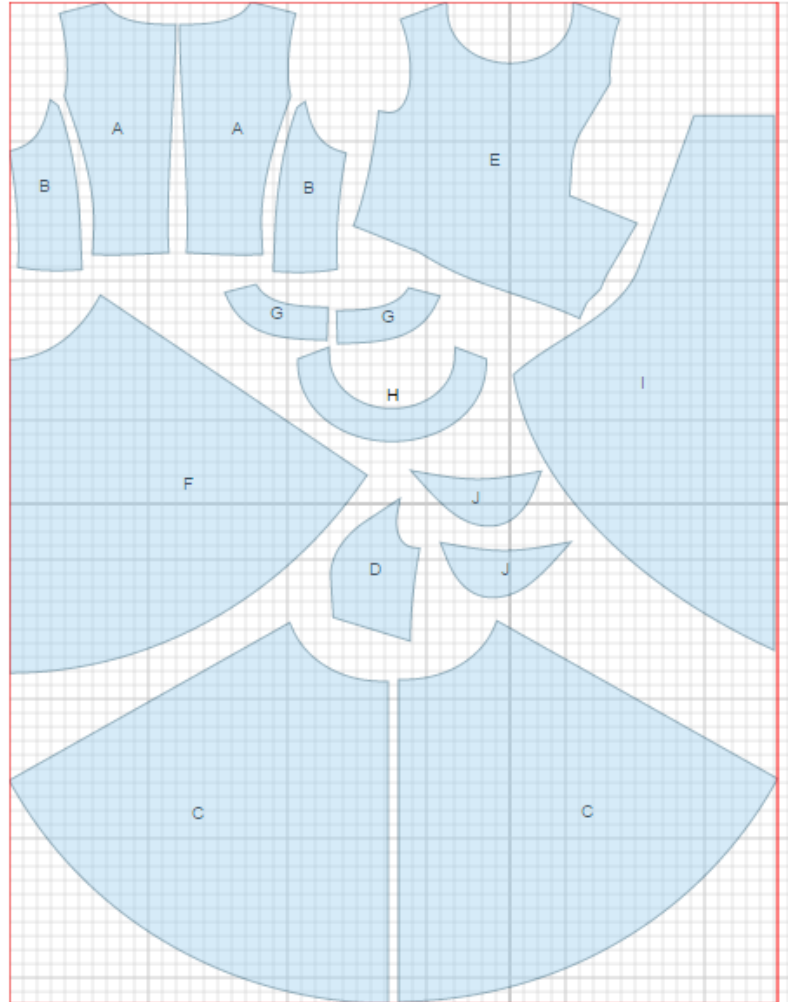
Attention! The amount of fabric needed for your pattern is not included. It will depend on the selected pattern size, the width, and design of the fabric you plan to use. First, print all the paper patterns and lay them out at the width of fabric you plan to use (usually from 90 to 150 cm). Measure how much fabric you will need. Don't forget to account for pieces that need to be cut multiple times and pieces that are cut on the fold.



CUTTING:

Main fabric:

1. Center upper back - cut 2 (A)
2. Side upper back - cut 2 (B)
3. Lower back - cut 2 (C)
4. Side upper front - cut 1 (D)
5. Upper front - cut 1 (E)
6. Lower front - cut 1 on fold (F)
7. Back neck facing - cut 2 (G)
8. Front neck facing - cut 1 (H)
9. Flounce - cut 1 (I)
10. Sleeve - cut 2 (J)



Fusible interfacing:

1. Back neck facing - cut 2 (G)
2. Front neck facing - cut 1 (H)

INSTRUCTIONS:

1. Apply fusible interfacing to front and back neck facings.
2. Sew upper side backs to upper center back. Serge seams and press towards center. Sew upper back to lower back. Serge and press seam upward.. Serge center back edges separately. Sew center back seam from zipper mark down to hem, press seam open. Sew in zipper.
3. Sew side front to front. Fold horizontal seam of side front down to first pleat line. Fold middle line down to third line. Baste pleats in place along side edge. Sew upper front to lower front, serge seam and press upward.
4. Serge outer edges of flounce, press onto wrong side and topstitch.
5. Sew shoulder seams, serge and press seams towards back. Sew side seams, inserting flounce into left side seam, serge and press seams towards back.
6. Sew shoulder seams of facings, press seam apart. Serge outer edges. Pin facing on garment, right sides together and sew to neckline. Clip into curves, turn facing under, straighten and press. Slipstitch facing to zipper tape. Baste facing to garment along shoulder seams.
7. Serge bottom edge of sleeve, turn under and topstitch. Sew sleeves into armholes. Serge seam. Cut or use ready-made bias tape, its width should equal 4 cm and length should equal the length of lower armhole + 5 cm. Fold bias tape in half lengthwise right side out and press. Pin bias tape to armhole edge from the right side and sew. Fold bias tape onto wrong side and topstitch onto main piece along fold. Press.
8. Serge lower edge of garment, press onto wrong side and topstitch.
9. Make and baste two pleats on flounce and slipstitch flounce to dress. Sew decorative flower onto the place where flounce is slipstitched to dress.

TECHNICAL DRAWING:

