

Recommendations on fabric: light-weight natural/mixed fabric suitable for blouses, e.g. silk.

You will also need: fusible interfacing, 10 buttons.

Seam allowances: hem - 1.5 cm, other seams - 1 cm.

Note on seam allowances:

- If the pattern has double contour the seam allowances are included. They are 1 cm unless specified otherwise.

- If the pattern has single contour, the seam allowances are NOT included and need to be added when laying out the pattern.

Note on length of fabric:

Attention! The amount of fabric needed for your pattern is not included. It will depend on the selected pattern size, the width, and design of the fabric you plan to use. First, print all the paper patterns and lay them out at the width of fabric you plan to use (usually from 90 to 150 cm). Measure how much fabric you will need. Don't forget to account for pieces that need to be cut multiple times and pieces that are cut on the fold.



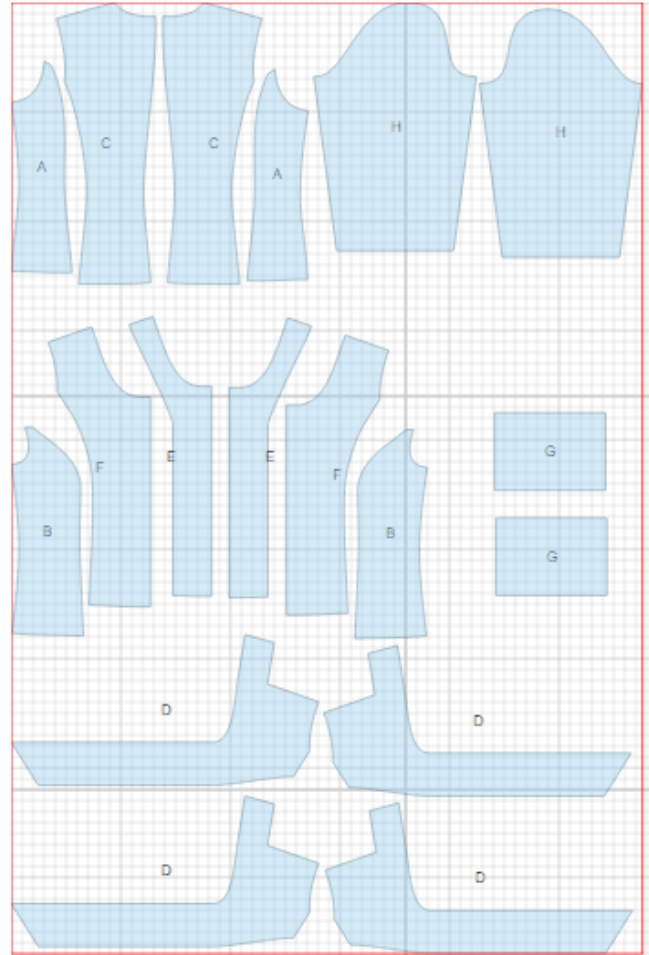
CUTTING:

Main fabric:

1. Side back – cut 2 (A)
2. Side front - cut 2 (B)
3. Center back - cut 2 (C)
4. Front yoke - cut 4 (D)
5. Front band facing - cut 2 (E)
6. Center front - cut 2 (F)
7. Cuff - cut 2 (G)
8. Sleeve - cut 2 (H)

Fusible interfacing:

1. Front band facing - cut 2 (E)
2. Cuff - cut 2 (G)



INSTRUCTIONS:

1. Apply fusible interfacing to listed pieces.
2. Sew side backs to center back. Serge seams and press towards center. Sew center back seam. Serge and press towards left.
3. Serge outer edge of front band facing. Pin front band facing to front, right sides together, and sew center edge and neckline. Trim away corners. Fold onto wrong side.
4. Sew center seam of collars on yokes. Press seam apart. Pin yokes right sides together and sew lower edge, bow, and neckline. Trim away corners and turn right side out. Pin yoke onto front and baste along princess seam and shoulder edge.
5. Sew side fronts to front. Serge seams and press towards center.
6. Clip into seam allowance of self collar in corner. Sew shoulder seams. Press seams towards back. Sew in self collar. Serge seam allowances of shoulder seams and collar seams at the same time.
7. Sew side seams. Serge seams and press towards back.
8. Serge sleeve edges. Sew seam up to notch for slit. Press seam apart. Topstitch sides of slit at 0.2 cm from fold. Fold cuff in half lengthwise and sew short sides, sewing corner up to notch. Clip into seam allowances near notches. Turn cuff right side out and press. Sew outer cuff to sleeve, making pleats as desired. Turn seam allowance of inner cuff under, and stitch-in-the-ditch along seam of upper cuff.
9. Sew a gathering stitch on sleeve cap and gather fullness. Sew sleeves into armholes matching notches and adjusting ease. Serge.
10. Serge bottom edge of garment, press onto wrong side and topstitch. Make buttonholes and sew on buttons.

TECHNICAL DRAWING:

