

Recommendations on fabric: natural or faux leather.

You will also need: lining; separating zipper; 2 zippers for pockets; 4 snap-fasteners; shoulder pads.

Seam allowances: all seams - 1 cm.

Note on seam allowances:

- If the pattern has double contour the seam allowances are included. They are 1 cm unless specified otherwise.
- If the pattern has single contour, the seam allowances are NOT included and need to be added when laying out the pattern.

Note on length of fabric:

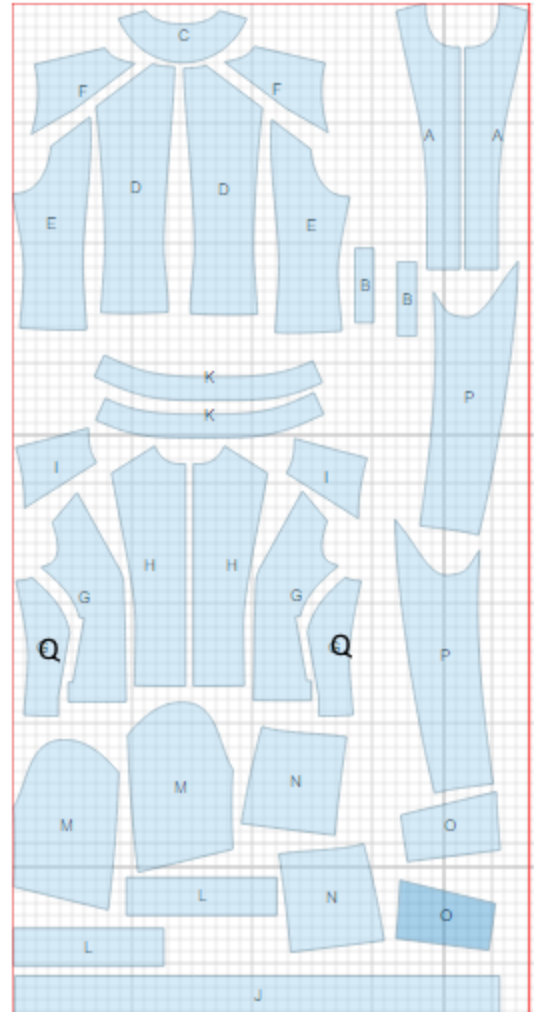
Attention! The amount of fabric needed for your pattern is not included. It will depend on the selected pattern size, the width, and design of the fabric you plan to use. First, print all the paper patterns and lay them out at the width of fabric you plan to use (usually from 90 to 150 cm). Measure how much fabric you will need. Don't forget to account for pieces that need to be cut multiple times and pieces that are cut on the fold.



CUTTING:

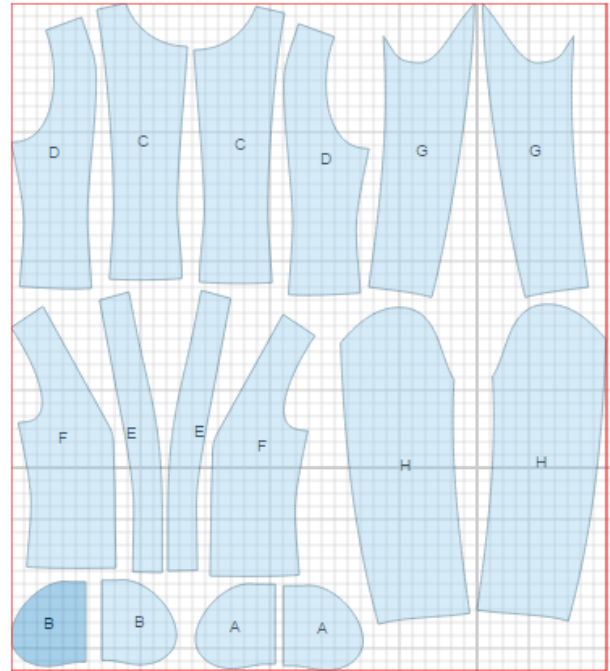
Main fabric:

1. Front band facing – cut 2 (A)
2. Valance/underlay piece – cut 2 (B)
3. Back neck facing – cut 1 (C)
4. Center back - cut 2 (D)
5. Side back– cut 2 (E)
6. Back yoke — cut 2 (F)
7. Side front — cut 2 (G)
8. Side front-body - cut 2 (Q)
9. Center front - cut 2 (H)
10. Front yoke - cut 2 (I)
11. Lower placket - cut 1 (J)
12. Stand-up collar – cut 2 (K)
13. Cuff - cut 2 (L)
14. Upper sleeve part - cut 2 (M)
15. Lower sleeve part - cut (N)
16. Center sleeve part - cut 2 (O)
17. Lower sleeve - cut 2 (P)



Lining:

1. Large pocket bag — cut 2 (A)
2. Small pocket bag — cut 2 (B)
3. Center back - cut 2 (C)
4. Side back - cut 2 (D)
5. Center front - cut 2 (E)
6. Side front - cut 2 (F)
7. Lower sleeve - cut 2 (G)
8. Upper sleeve - cut 2 (H)



INSTRUCTIONS:

1. Sew side backs to backs. Press seam apart. Sew decorative stitch, or topstitch at 0.2 cm from the seam. Sew center back seam. Work the seam allowances the same way.
2. Sew back yoke to back. Press seam allowance upwards and topstitch at 0.2 cm from the seam.
3. Sew side front to front. Press seam apart. Sew decorative stitch, or topstitch on both sides at 0.2 cm from the seam. Sew front side-body to front. Start and finish the stitch exactly near pocket mark line. Snip seam allowances on side-body near pocket mark, press princess seam toward center, press apart pocket's slit.
4. Topstitch underlay piece onto big pocket bag. Mark pocket location on front. Make diagonal slashes at 1-1.5 cm from the end of the pocket (on side front). Turn seam allowances of the pocket wrong side out through the given slit, straighten edges. Stitch pocket bags with their right sides to wrong side of zipper tape. Put the zipper under the edge of pocket opening, so teeth can not be seen. Sew in zipper, sewing the stitch from the right side and turning back pocket bags. Sew edges of pocket bags, catching the corners.

-
5. Sew decorative stitch or topstitch along princess seam at 0.2 cm from the seam, starting and finishing the stitch near pocket opening.
 6. Sew yoke to front. Press seam allowance onto yoke and sew decorative stitch or topstitch at 0.2 cm from the seam.
 7. Sew side and shoulder seams of the jacket. Press seams open. Sew outer collar to neckline.
 8. Sew upper sleeve, the inset, and lower inset of sleeve. Press the seams upward and sew a decorative stitch or topstitch at 0.2 cm from the seams. Sew elbow seam of sleeve up to the slit mark. Trim away seam allowance on lower sleeve at the notch level. Press seam allowance onto upper sleeve and put decorative stitch or topstitch on elbow seam at 0.2 cm from the seam. Sew front seam of sleeve. Sew sleeve into the jacket. Sew shoulder pads.
 9. Sew in zipper.
 10. Sew shoulder seams of front band facing and back neck facing. Press seam apart. Sew inner collar into the neckline of facing. Clip into curves and press seam apart. Sew seams of lining, leaving a slit in left side seam for turning. Sew in sleeves.
 11. Fold lower placket in half lengthwise, right sides together, and sew outer edges. Start the stitch on side edge exactly near marked line of placket connection. Trim seam allowances near corners, turn right side out.
 12. Pin facing onto right side of front, right sides together and sew along outer edge,, sewing the outer edge collar at the same time. Start and finish the stitch exactly near hem mark line. Clip into curves, turn right side out and press. Sew lining to inner edge of facing and facing. Sew lower edge of lining to inner placket. Press seam apart. Sew lower edge of the jacket to outer placket. Press seam allowance apart.
 13. Sew lining to sleeve seam allowances along the slit. Tack lower edges of sleeve and lining at 0.5 cm from the edge. Fold cuff in half lengthwise, right sides together. Sew outer edges. Trim seam allowances away and turn right side out. Sew top edges of cuff, inserting the sleeve between them. Stitch up the cuff on contour, continuing the cuff and sleeve connecting stitch.
 14. Sew decorative stitch or topstitch collar and lower placket contour.
 16. Sew additional decorative stitch or topstitch along front band at 0.5 cm from the zipper. Fix snap fasteners on collar, on hem placket, and on cuffs.

TECHNICAL DRAWING:

