

Recommendations on fabric: fabric suitable for coats

You will also need: Interlining such as Thinsulate and Primaloft; Velcro closures.

Note on seam allowances:

- If the pattern has double contour the seam allowances are included. They are 1 cm unless specified otherwise.
- If the pattern has single contour, the seam allowances are NOT included and need to be added when laying out the pattern.

Note on length of fabric:

Attention! The amount of fabric needed for your pattern is not included. It will depend on the selected pattern size, the width, and design of the fabric you plan to use. First, print all the paper patterns and lay them out at the width of fabric you plan to use (usually from 90 to 150 cm). Measure how much fabric you will need. Don't forget to account for pieces that need to be cut multiple times and pieces that are cut on the fold.



CUTTING:

Fabric:

1. Back – cut 1 on fold (A)
2. Off-set welt – cut 2 (B)
3. Sacking – cut 2 (C)
4. Front – cut 2 (D)
5. Front facing – cut 2 (E)
6. Collar – cut 2 (F)
7. Sleeve – cut 2 (G)
8. Hood side – cut 2 (H)
9. Hood center – cut 1 (I)

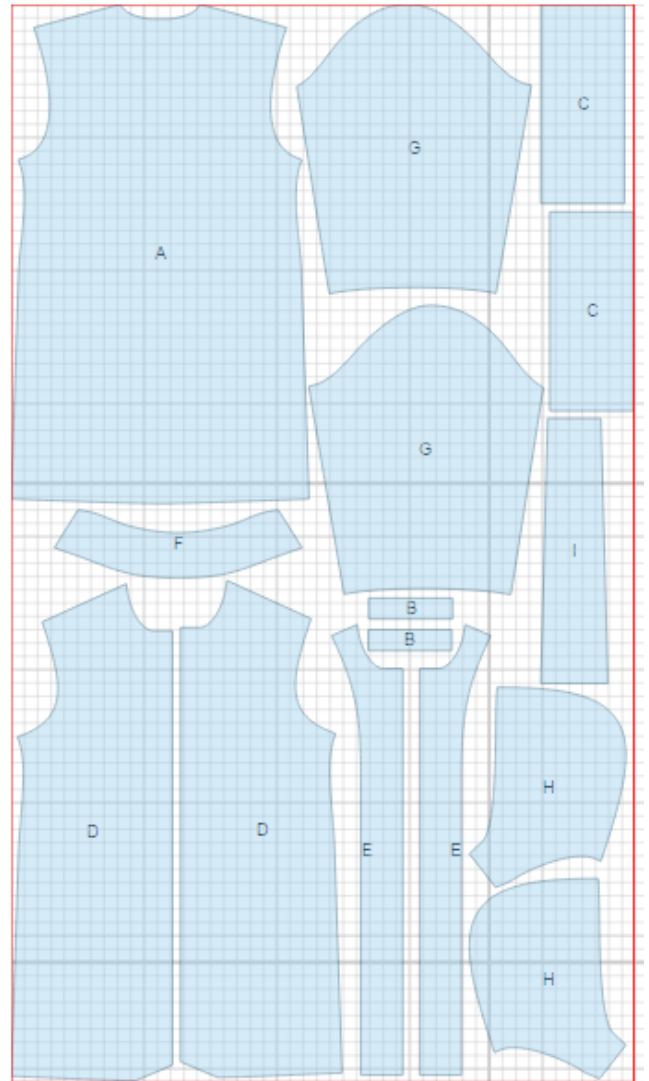
Lining:

1. Back – cut 1 on fold (A)
2. Front – cut 2 (D)
3. Sleeve – cut 2 (G)
4. Hood side – cut 2 (H)
5. Hood center – cut 1 (I)

Fusible interfacing:

Off-set welts

Interlining: apply the interlining to wrong side of back and fronts, sleeves, outer collar and hood pieces Topstitch horizontally at an equal distance on each piece (refer to technical drawing).



INSTRUCTIONS:

1. Apply the interfacing to wrong side of off-set welt.
2. Make SLIT POCKETS WITH OFF-SET WELT at side front parts: press off-set welts along the center right side out. Apply 2-cm strip of fusing to wrong side of front above pocket marking. Lay pocket welt and fabric sacking on front, right sides together, pin along pocket entrance marking and stitch (welt lengthwise/sacking edges must coincide with pocket marking center). Cut front between stitches, diagonally to stitch ends. Do not cut welts and sackings! Press seam allowances apart. Turn welts and sackings to wrong side through the slit, then tack. Lay lower sacking on welt on front wrong side (turn sacking upwards), and topstitch the welt on joining seam on right side, catching sacking. Press sacking downwards. Turn small triangles at slit ends to wrong side and stitch, with welts ends, strictly between upper stitch ends and lower stitch ends. Cut sacking, adjust and stitch.
3. Sew garment side and shoulder seams.
4. Lay outer collar and inner collar right sides together and sew along outer contour. Turn the collar right side out and press.
5. Sew side hood sections to center hood section. Topstitch center hood section next to seams. Sew hood lining sections together. Sew hood lining to hood, right sides together.
6. Sew sleeve seams. Sew sleeves into armholes. Press garment/sleeve hems to wrong side.
7. Sew lining, leaving a slit in one sleeve (for turning the garment right side out.) Stitch front facing to lining. Pin the lining on the garment, right sides together, and sew along all edges, inserting the hood and the collar between lining neckline and garment neckline. Turn the garment right side out and stitch the slit. Neatly sew sleeve hem of lining to fabric hem allowance.
8. Topstitch Velcro pieces on right front and left front.

TECHNICAL DRAWING:

