

# 7109

## Skirt

Recommendations on fabric: denim.

You will also need: fusible interfacing, zipper, a button, elastic of 3 cm wide.

Seam allowances: 3 cm for hem, 1 cm for other seams.

### Note on seam allowances:

- If the pattern has double contour the seam allowances are included. They are 1 cm unless specified otherwise.

- If the pattern has single contour, the seam allowances are NOT included and need to be added when laying out the pattern.

### Note on length of fabric:

*Attention! The amount of fabric needed for your pattern is not included. It will depend on the selected pattern size, the width, and design of the fabric you plan to use. First, print all the paper patterns and lay them out at the width of fabric you plan to use (usually from 90 to 150 cm). Measure how much fabric you will need. Don't forget to account for pieces that need to be cut multiple times and pieces that are cut on the fold.*



# 7109

## Skirt

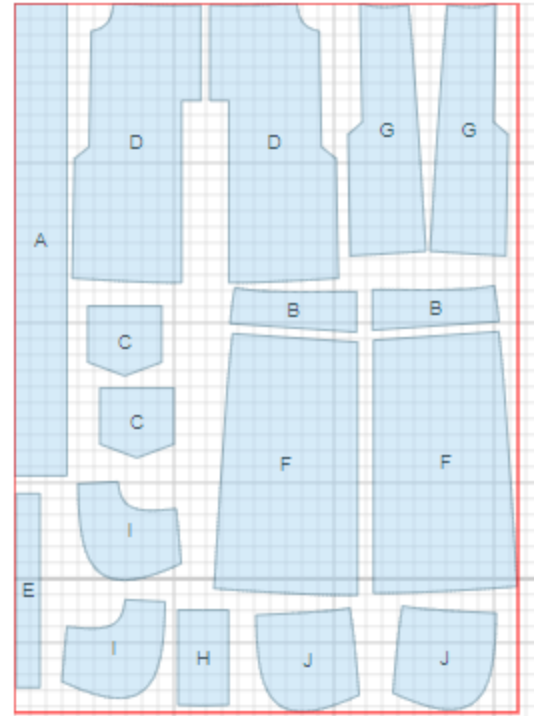
### CUTTING:

#### Main fabric:

1. Waistband – cut 1 (A)
2. Yoke – cut 2 (B)
3. Back pocket – cut 2 (C)
4. Center front – cut 2 (D)
5. Belt-loop – cut 1 (E)
6. Back - cut 2 (F)
7. Side front - cut 2 (G)
8. Button catch - cut 1 (H)
9. Side front - cut 2 (J)

#### Lining:

1. Pocket bag - cut 2 (I)



---

## INSTRUCTIONS:

1. Apply fusible interfacing to listed pieces.
2. Serge slit edge on side front. Turn seam allowance under and topstitch. Serge slit edge on center front. Sew side front to center front to vent. Serge and press seam. Press vent. Make decorative stitches from right side.
3. Place pocket bag on front piece right sides together and sew along pocket opening. Turn pocket bag to inside and make double decorative stitch along pocket opening at 0.1 and 0.5 cm from edge. Place side piece under front piece according to marking which shows pocket opening. Sew and serge pocket bag. Fasten pocket on upper and side edges of front skirt.
4. Sew yoke to back. Serge and press seam towards yoke. Make double decorative stitch at 0.1 and 0.5 cm.
5. Mark pocket location on back. Serge pocket edges. Turn upper edge under and topstitch. Turn lower and side edges under and press. Place pocket on back as marked and topstitch at 0.1 and 0.5 cm.
6. Sew center back seam. Serge and press seam. Make double decorative stitch.
7. Serge center front edges. Sew front seam from zipper mark down. Serge seam.
8. Press whole-cut zipper facing to wrong side. Sew zipper under edge of closure allowance (left front) into the edge. Sew another zipper tape to whole-cut facing on right front. Place button catch pieces right sides together and on two sides. Turn button catch out and press. Serge side edge of button catch. Sew button catch to zipper allowance on left front. Sew right edge of slit catching facing.
9. Sew serge and press side seams.
10. Fold belt loop in half lengthwise right sides together and sew at 0.5 - 0.7 cm from edges. Turn out, straighten and press.
11. Fold waistband in half lengthwise right sides together and press. Serge lower edge of belt.
12. Cut button loop into several ones. Topstitch belt loops as marked to lower edge of waistband. Take elastic of needed length and topstitch on waistband from one side seam to another. Sew unserged edge of waistband with belt loops to skirt. Sew ends of waistband. Trim seams and turn ends out. Topstitch serged

edge into waistband connecting seam. Turn ends of belt loops under and topstitch to upper edge of waistband.

13. Sew lower edge of skirt. Finish lower corners of vents. Turn lower edge under and topstitch. Mark and make a buttonhole on waistband. Mark and sew button.

**TECHNICAL DRAWING:**

