

Recommendations on fabric: natural or mixed suiting or jeans fabric.

You will also need: fusible interfacing, 6 buttons, 2 closures, bias tape, lining.

Seam allowances: on hem – 3.0 cm, other seams – 1.0 cm.

**Note on seam allowances:**

- If the pattern has double contour the seam allowances are included. They are 1 cm unless specified otherwise.
- If the pattern has single contour, the seam allowances are NOT included and need to be added when laying out the pattern.

**Note on length of fabric:**

*Attention! The amount of fabric needed for your pattern is not included. It will depend on the selected pattern size, the width, and design of the fabric you plan to use. First, print all the paper patterns and lay them out at the width of fabric you plan to use (usually from 90 to 150 cm). Measure how much fabric you will need. Don't forget to account for pieces that need to be cut multiple times and pieces that are cut on the fold.*



## CUTTING:

### Main fabric:

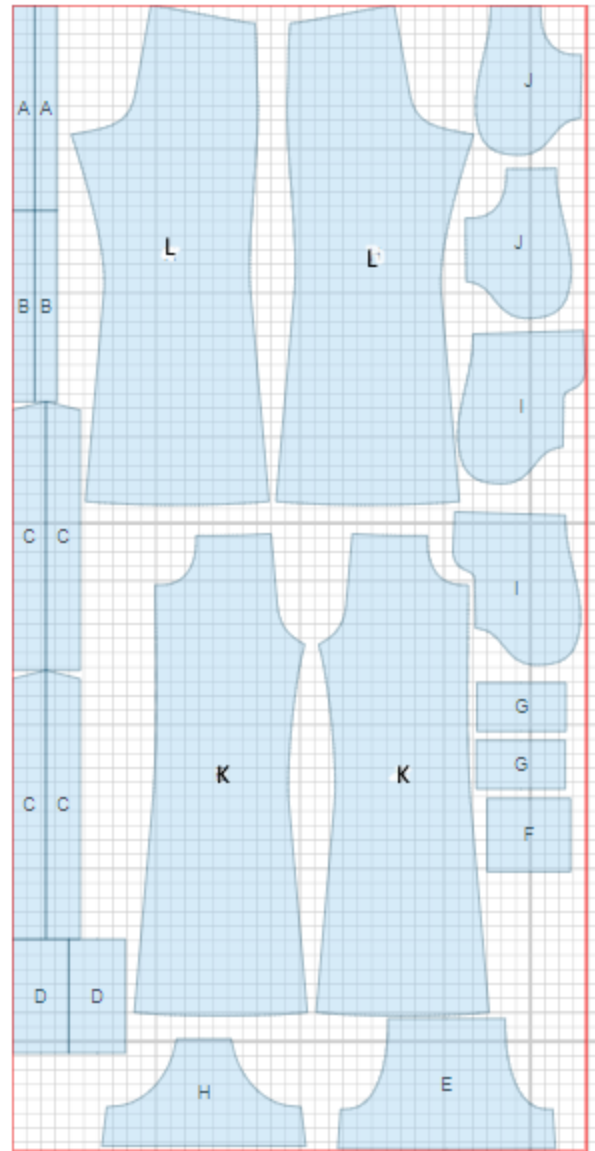
1. Front waistband – cut 2 (A)
2. Back waistband – cut 2 (B)
3. Strap – cut 4 (C)
4. Button catch – cut 2 (D)
5. Upper front – cut 1 (E)
6. Upper front pocket - cut 1 (F)
7. Pocket flap - cut 2 (G)
8. Upper back - cut 2 (H)
9. Side front - cut 2 (I)
10. Front half - cut 2 (K)
11. Back half - cut 2 (L)

### Lining:

1. Upper front – cut 1 (E)
2. Upper back - cut 1 (H)
3. Pocket bag - cut 2 (J)

### Fusible interfacing:

1. Front waistband – cut 1 (A)
2. Back waistband – cut 1 (B)
3. Button catch – cut 1 (D)
4. Pocket flap - cut 1 (G)



## INSTRUCTIONS:

1. Apply fusible interfacing to front/back waistband, pocket flap and button catch.
2. Place front pocket flaps right sides together and sew on three edges. Trim seams in corners and turn flap right side out. Straighten seams and make double decorative stitch on three sides at 0.5 cm from edge. Serge open edge.
3. Mark pocket / flap location on upper front. Serge upper edge of pocket, turn under and topstitch. Press side and lower edges of pocket to inside. Place pocket on front according to marking and topstitch. Sew the flap.
4. Place pocket bag and front half right sides together and sew on pocket opening. Turn pocket bag to inside and topstitch along pocket opening at 0.5cm from the edge. Place front half to marking on side front which shows pocket opening. Pin side front and front half on upper and side edges and sew. Sew and serge pocket edges.
5. Place upper front and upper front lining piece right sides together and sew outer edges leaving lower edge open. Trim seams in corners and turn piece right side out. Press. Make decorative stitch on contour at 0.5 cm from edge.
6. Place straps right sides together and sew trimming in corners. Turn strap right side out and press. Sew straps to upper back.
7. Place upper back and upper back lining piece right sides together and sew upper edge and armholes inserting straps. Turn upper back right side out and decorative stitch at 0.5 cm from edge.
8. Serge front / back center edges of trouser halves, side edge of front halves and the edge of whole-cut facing of front half. Sew and serge leg seams. Press seams towards back. Sew front/back center seams. Make another stitch on crotch seam near the halves connecting seam.
9. Serge lower edge of front waistband. Turn closure facing (on front half) to the inside and fasten on upper edge. Sew front waistband to upper front placing front piece between waistband pieces. Sew lower edge of front waistband to upper edge of front halves. Sew ends of waistband, trim corners and turn waistband to right side. Topstitch serged edge of waistband into waistband connecting seam.
10. Serge lower edge of back waistband. Sew upper back to back waistband inserting upper back piece between waistband pieces. Sew lower edge of back waistband to upper edge of back halves.

- 
11. Fold button catch in half lengthwise and sew upper edge. Trim seams in corners and turn right side out. Serge button catch on side lower edge making a curve. Crop side edge on back half. Sew button catch to side edge of back half according to marking. Serge side edge of back half and button catch connecting seam.
  12. Place front and back halves together so that button catch and front facing don't get into side seam. Sew side seams up to the pocket. Fasten button catch and facing together. Turn facing with button catch onto front half and fasten to pocket bag by hand. Topstitch side seam allowance onto back half on upper section of side seam.
  13. Serge lower edge of trousers, turn under and topstitch. Mark and make buttonholes on front halves, sew buttons on button catch. Mark and sew buttons on front (for straps). Set straps through brace clips.

TECHNICAL DRAWING:

