

Recommendations on fabric: cotton or fleece.

You will also need: white flannel for lining, zipper (length depends on the sweatshirt size), 2 buttons of 14 mm diameter.

Note on seam allowances:

- If the pattern has double contour the seam allowances are included. They are 1 cm unless specified otherwise.
- If the pattern has single contour, the seam allowances are NOT included and need to be added when laying out the pattern.

Note on length of fabric:

Attention! The amount of fabric needed for your pattern is not included. It will depend on the selected pattern size, the width, and design of the fabric you plan to use. First, print all the paper patterns and lay them out at the width of fabric you plan to use (usually from 90 to 150 cm). Measure how much fabric you will need. Don't forget to account for pieces that need to be cut multiple times and pieces that are cut on the fold.



CUTTING:

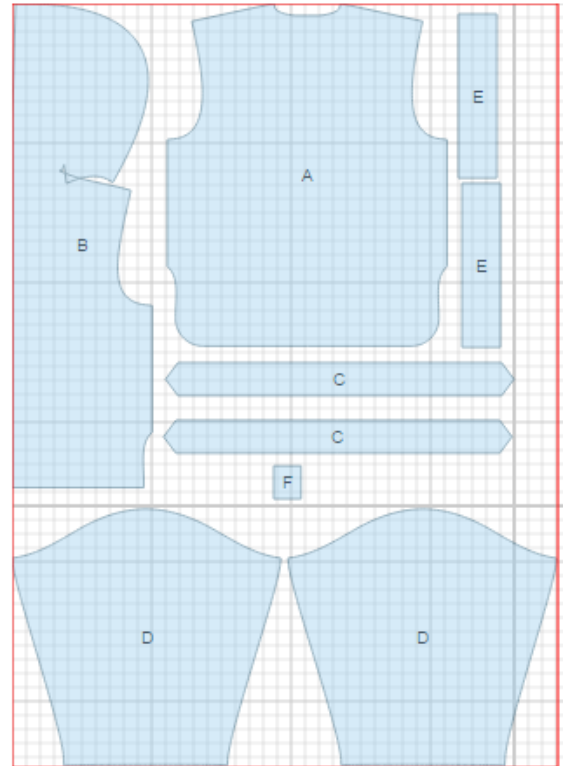
Main fabric:

1. Front / hood – cut 1 on fold (B)
2. Back - cut 1 (A)
3. Waistband - cut 2 on fold (C)
4. Sleeve - cut 2(D)
5. Front zipper cover - cut 1 (F)
6. Cuff - cut 2 (E)

Lining:

1. Front / hood – cut 1 on fold (B)
2. Back - cut 1 (A)
3. Sleeve - cut 2(D)

Note: Use main pattern pieces without changes to cut lining details for front/hood, back and sleeves.



INSTRUCTIONS:

1. Sew center hood seam. Press seam towards left side and topstitch at 0.5 cm from the seam.
2. Sew shoulder seams. Press seam towards back and topstitch at 0.5 cm.
3. Sew hood dart. Sew lower edge of hood into neckline matching center lines.
4. Sew sleeve into armhole matching notches. Press seam towards armhole and topstitch at 0.5 cm.
5. Sew side and sleeve seam.

-
6. Cut a slit for zipper on front.
 7. Open zipper. Pin zipper parts on slit from right side according to marking.
 8. Sew lining parts using steps for main fabric.
 9. Place lining and sweatshirt right sides together and sew on zipper edges (sewing zipper), hood edges, hem and side slit edges. Turn right side out, straighten, press, and make double decorative stitch.
 10. Make a fastening stitch along neckline sewing main garment and lining together.
 11. Baste hem of sleeve with lining.
 12. Sew cuff into ring. Press seam open.
 13. Sew one edge of cuff to hem of sleeve right sides together matching edges. Press cuff in half lengthwise wrong side inwards, turn open edge under and sew along the edge to hem of sleeve. Make decorative stitch at 0.5 cm.
 14. Turn edges of zipper cover under and sew on front according to marking.
 15. Place waistband pieces right sides together and sew along all sides leaving a small opening. Turn out, press and topstitch at 0.5 cm.
 16. Place waistband on front from right side according to marking, matching notches, and sew to edges of front side slits. Waistband will over-lap side slits and extend around to the back.
 17. Make buttonholes on waistband ends according to marking.
 18. Sew buttons on back.

TECHNICAL DRAWING:

