

Recommendations on fabric: cotton.

You will also need: 4 metal buttons of 16mm diameter, trouser zipper.

Note on seam allowances:

- If the pattern has double contour the seam allowances are included. They are 1 cm unless specified otherwise.

- If the pattern has single contour, the seam allowances are NOT included and need to be added when laying out the pattern.

Note on length of fabric:

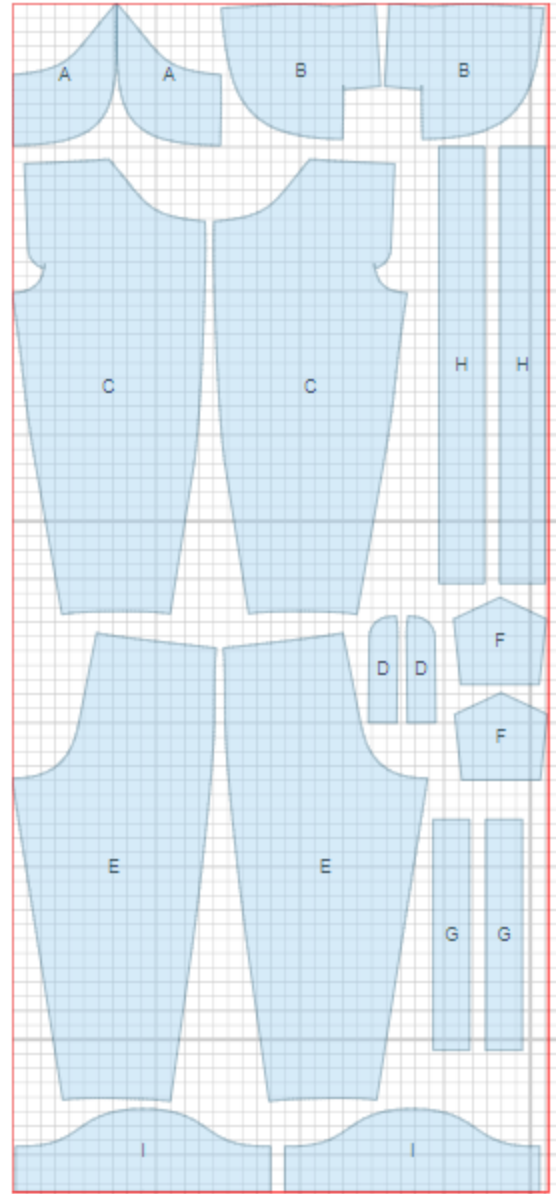
Attention! The amount of fabric needed for your pattern is not included. It will depend on the selected pattern size, the width, and design of the fabric you plan to use. First, print all the paper patterns and lay them out at the width of fabric you plan to use (usually from 90 to 150 cm). Measure how much fabric you will need. Don't forget to account for pieces that need to be cut multiple times and pieces that are cut on the fold.



CUTTING:

Main fabric:

1. Bag pocket – cut 2 (A)
2. Side piece – cut 2 (B)
3. Front – cut 2 (C)
4. Button catch – cut 2 (D)
5. Back – cut 2 (E)
6. Back pocket - cut 2 (F)
7. Waistband - cut 2 (G)
8. Strap - cut 2 (H)
9. Bodice - cut 2 (I)



INSTRUCTIONS:

Note: Make decorative stitches with contrast threads.

1. Place pocket bag to front right sides together and sew on pocket opening. Turn pocket bag to inside and make double decorative stitch on pocket opening fold.
2. Place side piece on pocket bag right sides together matching lower edges and sew side piece to pocket bag. Serge seams.
3. Tack side piece to front half on side edges.
4. Sew the tuck on front half from wrong side, press and make horizontal zig-zag stitch of 1 cm long on bottom.
5. Make tucks on waist edge of side piece as marked, press and tack on edges.
6. Finish closure edge of side piece. Turn seam allowance to wrong side on outer dashed line and tack on upper and lower edges. Finish lower edge of closure with zig-zag stitch.
7. Press upper edge of back pockets twice under and sew. Make decorative zig-zag stitch at 1 cm below the seam. Place pockets on back halves and topstitch.
8. Sew side seams up to closure mark. Serge.
9. Sew and serge leg seams.
10. Sew front seam to closure mark. Serge seam, press towards left side and make double decorative stitch.
11. Install zipper.
12. Fold strap in half lengthwise right sides together and sew on long and one short edges. Turn strap out, straighten, press and make decorative stitch at 0.5 cm from edge and one big zig-zag stitch along center.
13. Cut open end of strap to make an angle. Pin straps angle wise (as they will be crossed), from right side, to upper edge of back waistband at 4.5 cm from center line.

-
14. Place back waistbands right sides together and sew on side and upper edges connecting straps. Turn out and press.
 15. Turn lower edges of back waistbands under, insert upper edge of back halves between them and sew. Make decorative stitch on all sides of back waistband.
 16. Place bodice pieces right sides together and sew on upper and side edges. Turn out and press.
 17. Place bodice on front halves from right side, match edges and sew outer part of bodice to main garment. Press bodice upwards, turn lower edge of inner part of bodice under, and sew with double stitch to main garment. Make decorative stitch on bodice perimeter.
 18. Make decorative zig-zag stitch at 2 cm above bodice connecting seam.
 19. Turn lower edges of trousers twice under and sew with double stitch.
 20. Make buttonholes on bodice and back waistband as marked.
 21. Sew buttons.
 22. Cross straps on back at 10.5 cm from waistband and sew them into seams of decorative stitches.

TECHNICAL DRAWING:

