

Recommendations on fabric: knit fabric: fleece, polartec or jersey.

You will also need: fusible interfacing.

Seam allowances: on hem and hem of sleeve - 2.5 cm, upper edge of sleeve - 4.0 cm, other seams – 1.0 cm.

**Note on seam allowances:**

- If the pattern has double contour the seam allowances are included. They are 1 cm unless specified otherwise.
- If the pattern has single contour, the seam allowances are NOT included and need to be added when laying out the pattern.



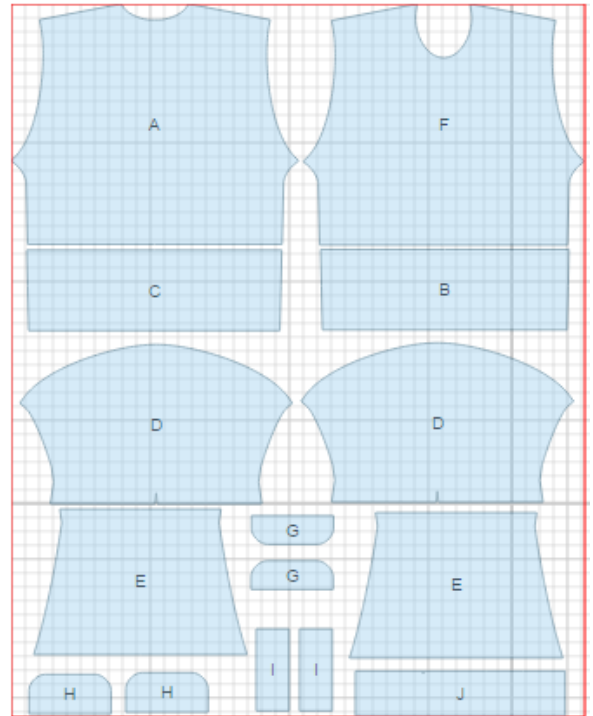
**Note on length of fabric:**

Attention! The amount of fabric needed for your pattern is not included. It will depend on the selected pattern size, the width, and design of the fabric you plan to use. First, print all the paper patterns and lay them out at the width of fabric you plan to use (usually from 90 to 150 cm). Measure how much fabric you will need. Don't forget to account for pieces that need to be cut multiple times and pieces that are cut on the fold.

**CUTTING:**

**Main fabric:**

1. Front – cut 1 (F)
2. Lower front - cut 1 (B)
3. Back - cut 1 (A)
4. Lower back - cut 1 (C)
5. Upper sleeve - cut 2 (D)
6. Lower sleeve - cut 2 (E)
7. Collar - cut 1 (J)
8. Off-set welt - cut 2 (I)
9. Big pocket bag - cut 2 (H)
10. Small pocket bag - cut 2 (G)



**Advice:** Knit fabric pieces are sewn together with special elastic or narrow zig-zag stitch. Seam allowance on hem is stitched with twin needles to save stretchiness. Pieces can also be sewn together with 3 or 4 – thread serger. When serging, cut seam allowances to 0.6 – 0.8 cm.

**Note:** Before sewing please check your head gets through the collar sewn into ring.

**INSTRUCTIONS:**

1. Pockets: Apply fusible interfacing to off-set welt, fold in half lengthwise and press. Apply fusible interfacing to pocket location. Mark a line on the welt which shows the width of ready welt. Topstitch small pocket bag on inner side of off-set welt. Lay off-set welt with pocket bag on right side of lower front matching pocket marking line to line on off-set welt. Sew off-set welt. Sew big pocket bag to upper line of pocket marking. Cut pocket opening in center between marking lines making slanting cuts to corners. Turn pocket pieces to wrong side. Straighten and press seam allowances. Sew pocket bags together fastening in corners.

2. Sew lower back to upper back and lower front to upper front. Topstitch along seams. Sew shoulder seams. Sew upper sleeve into open armhole. Topstitch along armhole. Sew lower sleeve to upper sleeve. Topstitch seam. Sew side seam and sleeve seam with one continuous stitch, leaving slit section unsewn.

3. Turn sleeve edge under and topstitch at 3 cm.
4. Sew collar into ring, then fold in half. Line collar seam up with left shoulder seam. Pin collar into neckline stretching the edge of collar consistently around neckline, baste, check, and then sew with a serger or a stretch-stitch.
5. Press hems under. Topstitch hems and slits.

**TECHNICAL DRAWING:**

