

Recommendations on fabric: knit fabric.

You will also need: fusible interfacing, two pocket zippers (zip length depends on pocket opening length), elastic of 4.5 cm wide, cord, velcro tape. .

Seam allowances: hem and lower edge of sleeve – 2.0 cm, other seams – 0.8 cm.

**Note on seam allowances:**

- If the pattern has double contour the seam allowances are included. They are 1 cm unless specified otherwise.
- If the pattern has single contour, the seam allowances are NOT included and need to be added when laying out the pattern.

**Note on length of fabric:**

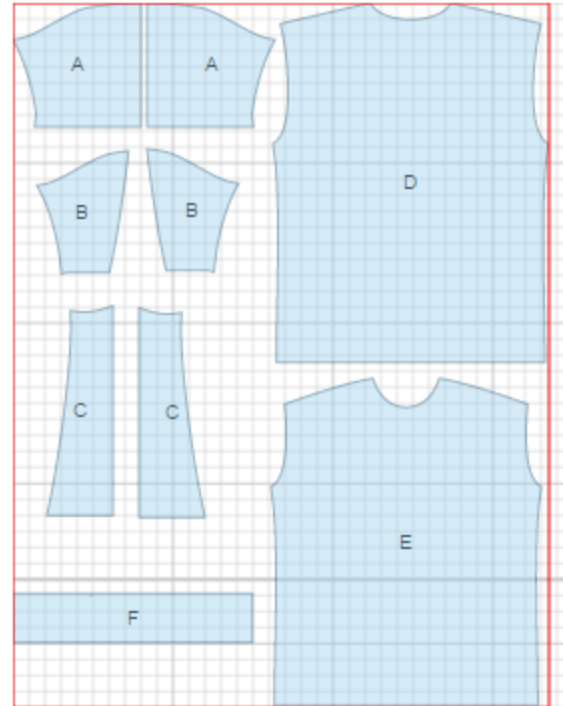
*Attention! The amount of fabric needed for your pattern is not included. It will depend on the selected pattern size, the width, and design of the fabric you plan to use. First, print all the paper patterns and lay them out at the width of fabric you plan to use (usually from 90 to 150 cm). Measure how much fabric you will need. Don't forget to account for pieces that need to be cut multiple times and pieces that are cut on the fold.*



**CUTTING:**

Main fabric:

1. Back sleeve - cut 2 (A)
2. Front sleeve - cut 2 (B)
3. Insert - cut 2 (C)
4. Back - cut 1 (D)
5. Front - cut 1 (E)
6. Neck band (collar) - cut 1 (F)



**Advice:** Knit fabric pieces are sewn together with special elastic or narrow zig-zag stitch. Seam allowance on hem is stitched with twin needles to save stretchiness. Pieces can also be sewn together with 3 or 4 – thread serger. When serging, cut seam allowances to 0.6 – 0.8 cm.

**INSTRUCTIONS:**

**Note:** Before sewing please check if head fits through the band sewn into ring.

1. Sew front sleeves to front. Sew insert to front/front sleeve. Sew back sleeves to back. Sew shoulder seams. Sew side seam and sleeve seam with one continuous stitch.
2. Sew neck band (collar) into ring. Fold in half. Sew band into neckline stretching the edge of band and placing band seam at left shoulder seam. Make decorative stitch along neckline with stretch-stitch.
3. Serge hem and lower edge of sleeve. Turn under, press and sew hem with twin needles or a coverstitch machine.
4. Press ready t-shirt.

TECHNICAL DRAWING:

