

## Sewing Pattern — Waistcoat 6112

Recommendations on fabric: whipcord (polyester, cotton);  
lining

You will also need: fusible interfacing; 1 separable zipper (the length of zipper depends on the length of the garment in front including the height of the stand-up collar); 2 non-separable zippers (the length depends on the length of pocket); elastic cord; 4 fixing clamps for cord; 4 metal eyelets.

If the pattern has a double line around it, the seam allowances are included.

**Note:** By default, seam allowances are NOT included (single line) and will need to be added when laying out and cutting details.

Seam allowances: on hem of main fabric details –  
4.5 cm, along the edge of lining – 0cm, all other seams - 1cm.

Attention! First of all, please print all the paper patterns and lay them out at the width of fabric you plan to use (usually from 90 to 150 cm) to see how much fabric you will need. Don't forget to take into account pieces to be duplicated or cut on a fold.

When sewing the garment, pay attention to notches. They must match up with corresponding pieces.

### **CUTTING:**

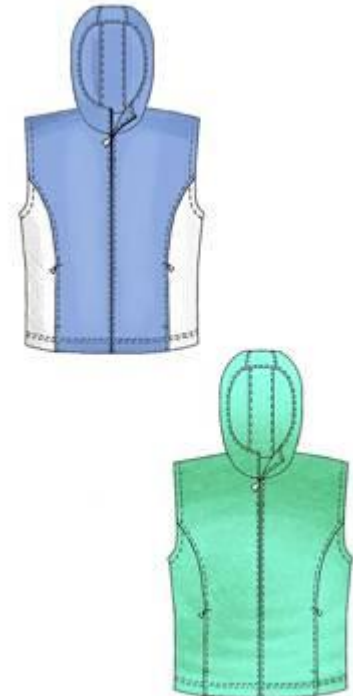
The word, “beam” used on some patterns means “straight of grain”. Some pieces will be cut on the fold, this is noted on the pattern piece. Mark all notches and other design features such as darts, pleats etc. from the pattern onto your fabric.

#### Fabric:

1. Front - 2 details
2. Back - 1 detail
3. Side front – 2 details
4. Side back – 2 details
5. Hood - 2 details
6. Central part of hood - 1 detail
7. Big pocket bag - 2 details
8. Hood facing – 1 detail

#### Lining:

1. Front - 2 details
2. Back - 1 detail
3. Small pocket bag - 2 details
4. Hood - 2 details
5. Central part of hood - 1 detail



## **INSTRUCTIONS:**

1. Pocket. Apply fusible interfacing to pocket location on front. Stitch side front, leaving pocket entrance unsewn. Trim seam allowances in corners. Press seam toward side front, press pocket entrance apart. Stitch zipper together with small pocket bag to front. Other edge of zipper together with big pocket bag stitch to side front. Sew pocket bags. Stay-stitch on pocket entrance and put decorative stitch. Edges of pocket bags must go into zipper connecting seam and come to hem line.
2. Assembly. Stitch side part to back. Stitch on connecting seams. Sew shoulder seams. Stitch on shoulder seam on back. Sew side seams. Sew parts of hood. Stitch on central part seams. Sew hood into the neckline. Set eyelets on hood according to marks.
3. Lining. Sew lining details. Sew parts of hood lining and connect to hood facing. Sew hood lining into the lining neckline.
4. Zipper. Place half of zipper with the edge of front facing right sides together (zipper blade are turned from front band). Overstitch edges of front bands and hood with lining, stitching in zipper at the same time. Turn garment right side out.
5. Overstitch armholes with lining and stitch.
6. Serge holes for cord on hem. Press hem, turning first at 1cm, then at 3.5cm. Topstitch hem of the garment.
7. Stitch on front bands and hood.
8. Press ready waistcoat.
9. Set elastic cord into hood and hem of the waistcoat.

## **TECHNICAL DRAWING:**

