

Recommendations on fabric: satin, lace.

You will also need: separating zip; metal/plastic bones; stiff organza (lining), fusing.

Seam allowances: 2 cm for middle back seam (to stitch the zipper). 1 cm for other seams.

Note on seam allowances:

- If the pattern has double contour the seam allowances are included. They are 1 cm unless specified otherwise.

- If the pattern has single contour, the seam allowances are NOT included and need to be added when laying out the pattern.

Note on length of fabric:

Attention! The amount of fabric needed for your pattern is not included. It will depend on the selected pattern size, the width, and design of the fabric you plan to use. First, print all the paper patterns and lay them out at the width of fabric you plan to use (usually from 90 to 150 cm). Measure how much fabric you will need. Don't forget to account for pieces that need to be cut multiple times and pieces that are cut on the fold.



CUTTING:

Satin:

1. All corset pieces as well as pipings (you can use the satin as lining also).

Sheer lace:

1. All corset pieces

Stiff organza:

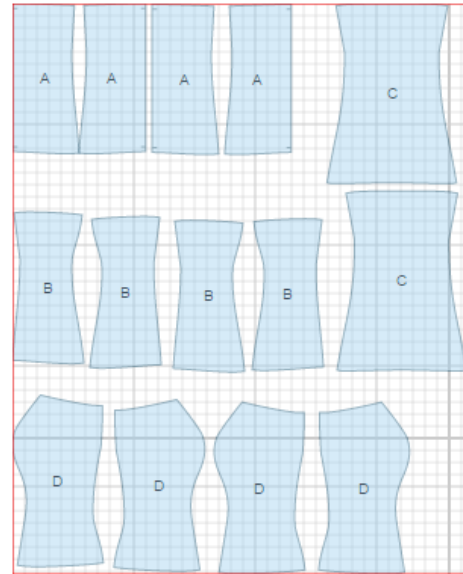
1. All main corset pieces excluding bands

Fusible Interfacing:

1. All corset pieces as well as bands

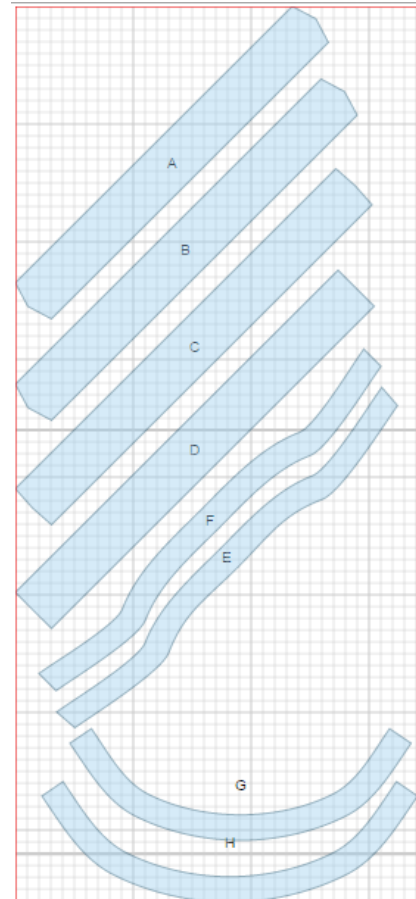
Satin/lace/organza:

1. Center back - cut 4 (A)
2. Side back - cut 4 (B)
3. Center front - cut 2 (C)
4. Side front - cut 4 (D)



Satin/lace/fusible interfacing:

1. Low band_1 - cut 1 (A)
2. Low band_2 - cut 1 (B)
3. Upper band_1 - cut 1 (C)
4. Upper band_2 - cut 1 (D)
5. Upper bias tape_1 - cut 1 (E)
6. Upper bias tape_2 - cut 1 (F)
7. Low bias tape_1 - cut 1 (G)
8. Low bias tape_2 - cut 1 (H)



INSTRUCTIONS:

1. Set metal/plastic bones which are 2 cm shorter than seam length (to make sewing more comfortable) in bodice seams.
2. Apply fusible interfacing to bands.
3. Press upper band_2, along the center, then topstitch it on front/back (with raw edge) at 4.5 cm from upper edge.
4. Press upper band_1 along the center, then sew to corset upper front/back edges. This band will overlap upper band_2.
5. Finish top edge with bias tape.
6. Press lower band_1 and lower band_2 along the center; topstitch them to front/back beginning at waist. Lower band_1 will overlap Lower band-2 as shown in the diagram.
7. Finish lower edge of corset with bias tape.
8. Separating zipper is sewn in center back.

TECHNICAL DRAWING:

